



## Datasheet for ABIN7264696 anti-PBXIP1 antibody



[Go to Product page](#)

### 1 Image

#### Overview

Quantity:	200 µL
Target:	PBXIP1
Reactivity:	Human, Mouse, Rat
Host:	Rabbit
Clonality:	Polyclonal
Conjugate:	This PBXIP1 antibody is un-conjugated
Application:	Western Blotting (WB)

#### Product Details

Immunogen:	Recombinant fusion protein of human PBXIP1 (NP_065385.2).
Isotype:	IgG
Characteristics:	Polyclonal Antibody
Purification:	Affinity purification

#### Target Details

Target:	PBXIP1
Alternative Name:	PBXIP1 ( <a href="#">PBXIP1 Products</a> )
Background:	The protein encoded by this gene interacts with the PBX1 homeodomain protein, inhibiting its transcriptional activation potential by preventing its binding to DNA. The encoded protein, which is primarily cytosolic but can shuttle to the nucleus, also can interact with estrogen receptors alpha and beta and promote the proliferation of breast cancer, brain tumors, and lung cancer.

## Target Details

---

Several transcript variants encoding different isoforms have been found for this gene. More variants exist, but their full-length natures have yet to be determined.

Molecular Weight: Observed\_MW: 110 kDa  
Calculated\_MW: 72 kDa/77 kDa/80 kDa

Gene ID: 57326

UniProt: [Q96AQ6](#)

## Application Details

---

Application Notes: WB 1:1000-1:2000

Restrictions: For Research Use only

## Handling

---

Format: Liquid

Concentration: 1 mg/mL

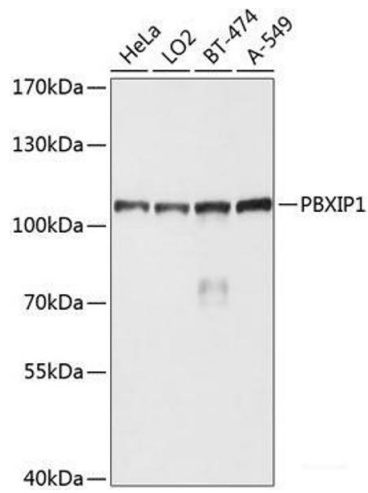
Buffer: PBS with 0.02 % sodium azide, 50 % glycerol, pH 7.3

Preservative: Sodium azide

Precaution of Use: This product contains Sodium azide: a POISONOUS AND HAZARDOUS SUBSTANCE which should be handled by trained staff only.

Storage: -20 °C

Storage Comment: Store at -20°C. Avoid freeze / thaw cycles.



### Western Blotting

**Image 1.** Western blot analysis of extracts of various cell lines using PBXIP1 Polyclonal Antibody at dilution of 1:1000.