



Datasheet for ABIN7264700

## anti-E2F3 antibody



[Go to Product page](#)

### 1 Image

#### Overview

Quantity:	200 µL
Target:	E2F3
Reactivity:	Mouse, Rat
Host:	Rabbit
Clonality:	Polyclonal
Conjugate:	This E2F3 antibody is un-conjugated
Application:	Western Blotting (WB)

#### Product Details

Immunogen:	A synthetic peptide of human E2F3 (NP_001230005.1).
Isotype:	IgG
Characteristics:	Polyclonal Antibody
Purification:	Affinity purification

#### Target Details

Target:	E2F3
Abstract:	<a href="#">E2F3 Products</a>
Background:	This gene encodes a member of a small family of transcription factors that function through binding of DP interaction partner proteins. The encoded protein recognizes a specific sequence motif in DNA and interacts directly with the retinoblastoma protein (pRB) to regulate the expression of genes involved in the cell cycle. Altered copy number and activity of this gene

## Target Details

---

have been observed in a number of human cancers. There are pseudogenes for this gene on chromosomes 2 and 17. Alternative splicing results in multiple transcript variants.

Molecular Weight: Observed\_MW: 53 kDa  
Calculated\_MW: 37 kDa/49 kDa

Gene ID: 1871

UniProt: [O00716](#)

## Application Details

---

Application Notes: WB 1:500-1:2000

Restrictions: For Research Use only

## Handling

---

Format: Liquid

Concentration: 1 mg/mL

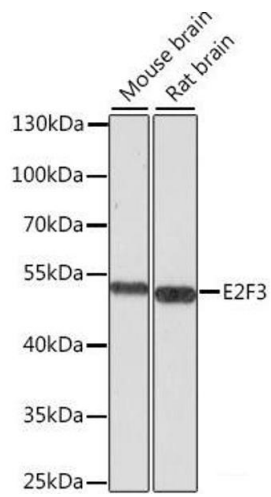
Buffer: PBS with 0.02 % sodium azide, 50 % glycerol, pH 7.3

Preservative: Sodium azide

Precaution of Use: This product contains Sodium azide: a POISONOUS AND HAZARDOUS SUBSTANCE which should be handled by trained staff only.

Storage: -20 °C

Storage Comment: Store at -20°C. Avoid freeze / thaw cycles.



### Western Blotting

**Image 1.** Western blot analysis of extracts of various cell lines using E2F3 Polyclonal Antibody at dilution of 1:1000.