

Datasheet for ABIN7264710

anti-Ribose 5-Phosphate Isomerase A (RPIA) antibody[Go to Product page](#)**2** Images

Overview

Quantity:	200 µL
Target:	Ribose 5-Phosphate Isomerase A (RPIA)
Reactivity:	Human, Mouse, Rat
Host:	Rabbit
Clonality:	Polyclonal
Conjugate:	Un-conjugated
Application:	Immunohistochemistry (IHC)

Product Details

Immunogen:	Recombinant fusion protein of human RPIA (NP_653164.2).
Isotype:	IgG
Characteristics:	Polyclonal Antibody
Purification:	Affinity purification

Target Details

Target:	Ribose 5-Phosphate Isomerase A (RPIA)
Alternative Name:	RPIA (RPIA Products)
Background:	The protein encoded by this gene is an enzyme, which catalyzes the reversible conversion between ribose-5-phosphate and ribulose-5-phosphate in the pentose-phosphate pathway. This gene is highly conserved in most organisms. The enzyme plays an essential role in the carbohydrate metabolism. Mutations in this gene cause ribose 5-phosphate isomerase

Target Details

deficiency. A pseudogene is found on chromosome 18.

Gene ID: 22934

UniProt: [P49247](#)

Pathways: [Cellular Glucan Metabolic Process](#), [Ribonucleoside Biosynthetic Process](#)

Application Details

Application Notes: IHC 1:50-1:200

Restrictions: For Research Use only

Handling

Format: Liquid

Concentration: 1 mg/mL

Buffer: PBS with 0.02 % sodium azide, 50 % glycerol, pH 7.3

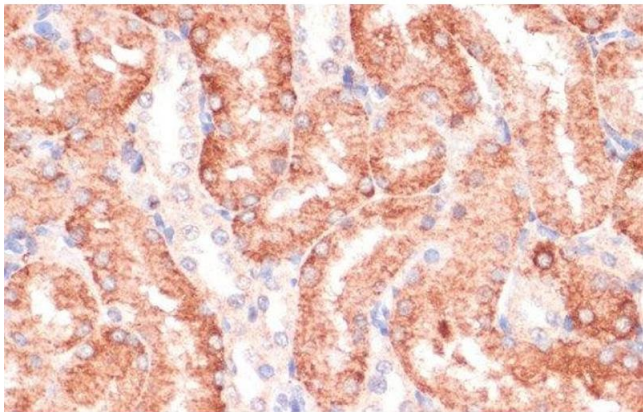
Preservative: Sodium azide

Precaution of Use: This product contains Sodium azide: a POISONOUS AND HAZARDOUS SUBSTANCE which should be handled by trained staff only.

Storage: -20 °C

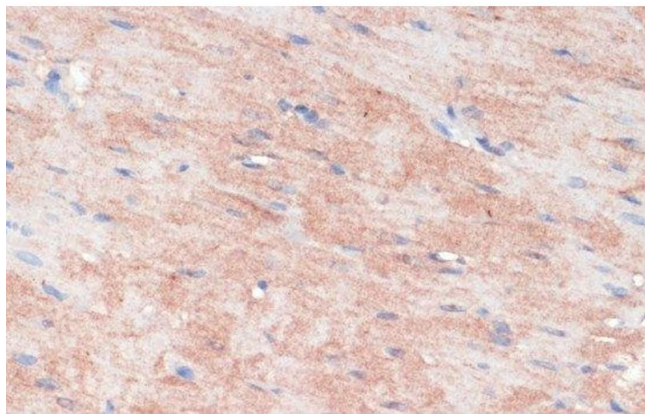
Storage Comment: Store at -20°C. Avoid freeze / thaw cycles.

Images



Immunohistochemistry (Paraffin-embedded Sections)

Image 1. Immunohistochemistry of paraffin-embedded Rat kidney using RPIA Polyclonal Antibody at dilution of 1:100 (40x lens).



Immunohistochemistry (Paraffin-embedded Sections)

Image 2. Immunohistochemistry of paraffin-embedded Rat heart using RPIA Polyclonal Antibody at dilution of 1:100 (40x lens).