



[Go to Product page](#)

Datasheet for ABIN7264733

anti-MCTS1 antibody

3 Images

Overview

| | |
|--------------|--------------------------------------|
| Quantity: | 200 µL |
| Target: | MCTS1 |
| Reactivity: | Human, Mouse, Rat |
| Host: | Rabbit |
| Clonality: | Polyclonal |
| Conjugate: | This MCTS1 antibody is un-conjugated |
| Application: | Immunofluorescence (IF) |

Product Details

| | |
|------------------|--|
| Immunogen: | Recombinant fusion protein of human MCTS1 (NP_054779.1). |
| Isotype: | IgG |
| Characteristics: | Polyclonal Antibody |
| Purification: | Affinity purification |

Target Details

| | |
|-------------------|---|
| Target: | MCTS1 |
| Alternative Name: | MCTS1 (MCTS1 Products) |
| Background: | MCTS1 (malignant T cell amplified sequence 1), also known as MCT1, is a 181 amino acid protein that is ubiquitously expressed and localizes to the cytoplasm of cells. MCTS1 may play a role in cell cycle regulation by decreasing cell doubling time and by shortening the duration of G1 transit time and G1/S transition. The protein level of Cdk4 and Cdk6 kinases activity and |

Target Details

cyclin D1 is enhanced by expression of MCTS1. As a translation enhancer, MCTS1 recruits DENR and binds to the cap complex of the 5'-terminus of mRNAs, subsequently altering the mRNA translation profile. MCTS1 promotes lymphoid tumor development and contributes to the pathogenesis and progression of breast cancer. MCTS1 positively regulates phosphorylation of ERK1 and ERK2.

Gene ID: 28985

UniProt: [Q9ULC4](#)

Application Details

Application Notes: IF 1:50-1:200

Restrictions: For Research Use only

Handling

Format: Liquid

Concentration: 1 mg/mL

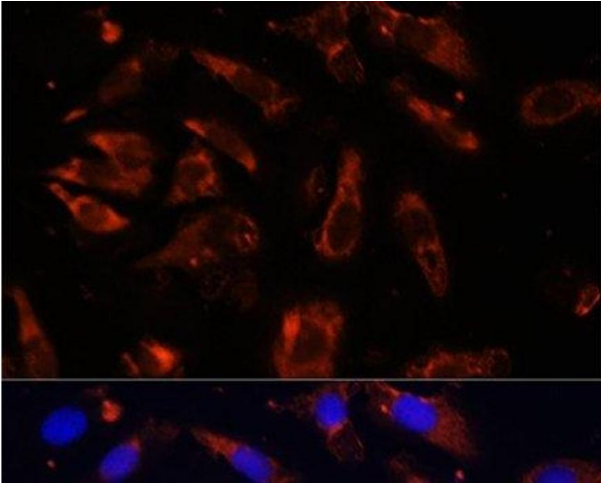
Buffer: PBS with 0.02 % sodium azide, 50 % glycerol, pH 7.3

Preservative: Sodium azide

Precaution of Use: This product contains Sodium azide: a POISONOUS AND HAZARDOUS SUBSTANCE which should be handled by trained staff only.

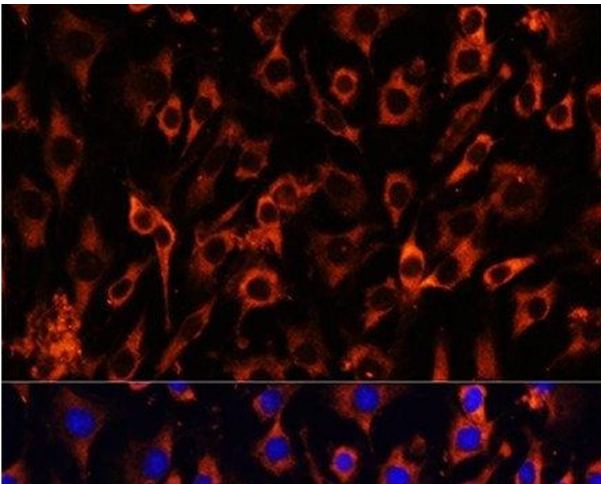
Storage: -20 °C

Storage Comment: Store at -20°C. Avoid freeze / thaw cycles.



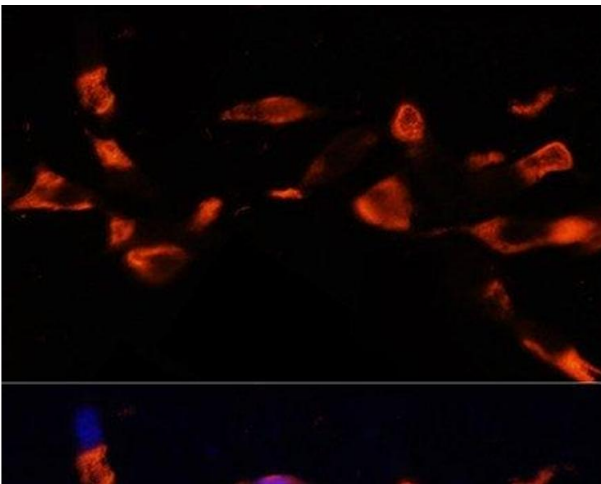
Immunofluorescence

Image 1. Immunofluorescence analysis of U-2OS cells using MCTS1 Polyclonal Antibody at dilution of 1:100 (40x lens). Blue: DAPI for nuclear staining.



Immunofluorescence

Image 2. Immunofluorescence analysis of C6 cells using MCTS1 Polyclonal Antibody at dilution of 1:100 (40x lens). Blue: DAPI for nuclear staining.



Immunofluorescence

Image 3. Immunofluorescence analysis of NIH/3T3 cells using MCTS1 Polyclonal Antibody at dilution of 1:100 (40x lens). Blue: DAPI for nuclear staining.