

Datasheet for ABIN7264735

**anti-GPM6A antibody**

3 Images

[Go to Product page](#)

## Overview

Quantity:	200 µL
Target:	GPM6A
Reactivity:	Human, Mouse
Host:	Rabbit
Clonality:	Polyclonal
Conjugate:	This GPM6A antibody is un-conjugated
Application:	Western Blotting (WB), Immunohistochemistry (IHC)

## Product Details

Immunogen:	A synthetic peptide of human GPM6A (NP_005268.1).
Isotype:	IgG
Characteristics:	Polyclonal Antibody
Purification:	Affinity purification

## Target Details

Target:	GPM6A
Alternative Name:	GPM6A ( <a href="#">GPM6A Products</a> )
Background:	Neuronal membrane glycoprotein M6-ais a protein that in humans is encoded by the GPM6A gene. Involved in neuronal differentiation, including differentiation and migration of neuronal stem cells. Plays a role in neuronal plasticity and is involved in neurite and filopodia outgrowth, filopodia motility and probably synapse formation. GPM6A-induced filopodia

## Target Details

formation involves mitogen-activated protein kinase (MAPK) and Src signaling pathways. May be involved in neuronal NGF-dependent Ca<sup>2+</sup> influx. May be involved in regulation of endocytosis and intracellular trafficking of G-protein-coupled receptors (GPCRs), enhances internalization and recycling of mu-type opioid receptor.

Molecular Weight: Observed\_MW: 31 kDa  
Calculated\_MW: 29 kDa/30 kDa/31 kDa

Gene ID: 2823

UniProt: [P51674](#)

## Application Details

Application Notes: WB 1:500-1:2000 IHC 1:50-1:200

Restrictions: For Research Use only

## Handling

Format: Liquid

Concentration: 1 mg/mL

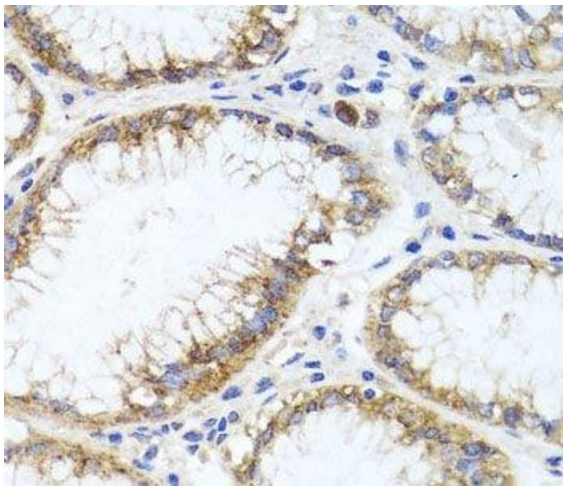
Buffer: PBS with 0.02 % sodium azide, 50 % glycerol, pH 7.3

Preservative: Sodium azide

Precaution of Use: This product contains Sodium azide: a POISONOUS AND HAZARDOUS SUBSTANCE which should be handled by trained staff only.

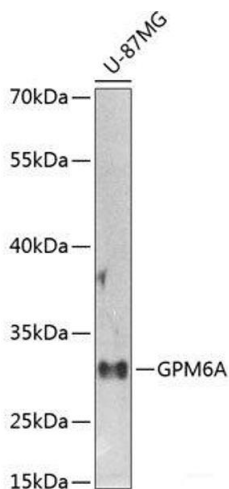
Storage: -20 °C

Storage Comment: Store at -20°C. Avoid freeze / thaw cycles.



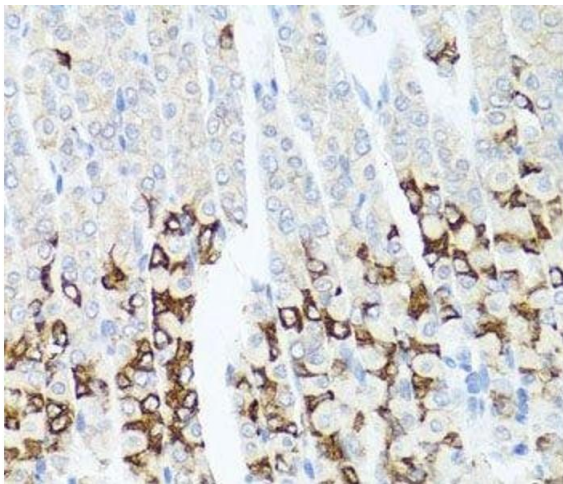
**Immunohistochemistry (Paraffin-embedded Sections)**

**Image 1.** Immunohistochemistry of paraffin-embedded Human stomach using GPM6A Polyclonal Antibody at dilution of 1:100 (40x lens).



**Western Blotting**

**Image 2.** Western blot analysis of extracts of U-87MG cells using GPM6A Polyclonal Antibody at dilution of 1:1000.



**Immunohistochemistry (Paraffin-embedded Sections)**

**Image 3.** Immunohistochemistry of paraffin-embedded Mouse stomach using GPM6A Polyclonal Antibody at dilution of 1:100 (40x lens).