



[Go to Product page](#)

Datasheet for ABIN7264737

anti-POMP antibody

1 Image

Overview

Quantity:	200 µL
Target:	POMP
Reactivity:	Human
Host:	Rabbit
Clonality:	Polyclonal
Conjugate:	This POMP antibody is un-conjugated
Application:	Western Blotting (WB)

Product Details

Immunogen:	Recombinant fusion protein of human POMP (NP_057016.1).
Isotype:	IgG
Characteristics:	Polyclonal Antibody
Purification:	Affinity purification

Target Details

Target:	POMP
Alternative Name:	POMP (POMP Products)
Background:	The protein encoded by this gene is a molecular chaperone that binds 20S preproteasome components and is essential for 20S proteasome formation. The 20S proteasome is the proteolytically active component of the 26S proteasome complex. The encoded protein is degraded before the maturation of the 20S proteasome is complete. A variant in the 5' UTR of

Target Details

this gene has been associated with KCLICK syndrome, a rare skin disorder.

Molecular Weight: Observed_MW: 16 kDa
Calculated_MW: 15 kDa

Gene ID: 51371

UniProt: [Q9Y244](#)

Application Details

Application Notes: WB 1:500-1:1000

Restrictions: For Research Use only

Handling

Format: Liquid

Concentration: 1 mg/mL

Buffer: PBS with 0.02 % sodium azide, 50 % glycerol, pH 7.3

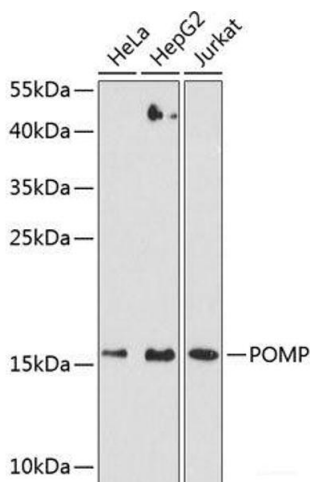
Preservative: Sodium azide

Precaution of Use: This product contains Sodium azide: a POISONOUS AND HAZARDOUS SUBSTANCE which should be handled by trained staff only.

Storage: -20 °C

Storage Comment: Store at -20°C. Avoid freeze / thaw cycles.

Images



Western Blotting

Image 1. Western blot analysis of extracts of various cell lines using POMP Polyclonal Antibody at dilution of 1:3000.