

Datasheet for ABIN7264739  
**anti-14-3-3 eta antibody**

## 3 Images

[Go to Product page](#)

## Overview

Quantity:	200 µL
Target:	14-3-3 eta (YWHAH)
Reactivity:	Human, Mouse, Rat
Host:	Rabbit
Clonality:	Polyclonal
Conjugate:	This 14-3-3 eta antibody is un-conjugated
Application:	Western Blotting (WB), Immunofluorescence (IF)

## Product Details

Immunogen:	Recombinant fusion protein of human YWHAH (NP_003396.1).
Isotype:	IgG
Characteristics:	Polyclonal Antibody
Purification:	Affinity purification

## Target Details

Target:	14-3-3 eta (YWHAH)
Alternative Name:	YWHAH ( <a href="#">YWHAH Products</a> )
Background:	This gene product belongs to the 14-3-3 family of proteins which mediate signal transduction by binding to phosphoserine-containing proteins. This highly conserved protein family is found in both plants and mammals, and this protein is 99 % identical to the mouse, rat and bovine orthologs. This gene contains a 7 bp repeat sequence in its 5' UTR, and changes in the number

## Target Details

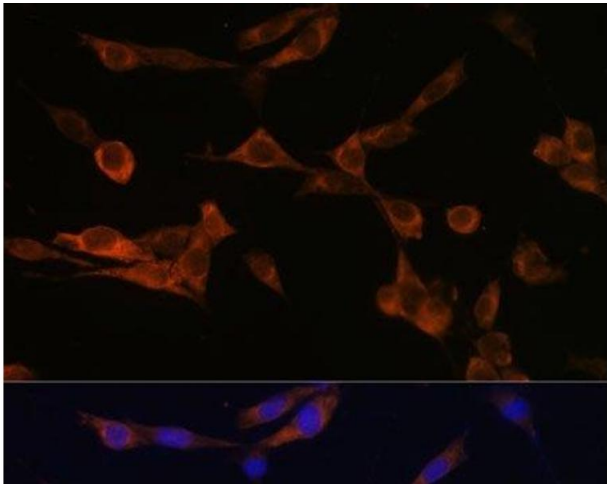
	of this repeat have been associated with early-onset schizophrenia and psychotic bipolar disorder.
Molecular Weight:	Observed_MW: 28 kDa Calculated_MW: 28 kDa
Gene ID:	7533
UniProt:	<a href="#">Q04917</a>
Pathways:	<a href="#">Intracellular Steroid Hormone Receptor Signaling Pathway</a> , <a href="#">C21-Steroid Hormone Metabolic Process</a> , <a href="#">Myometrial Relaxation and Contraction</a>

## Application Details

Application Notes:	WB 1:500-1:2000 IF 1:50-1:100
Restrictions:	For Research Use only

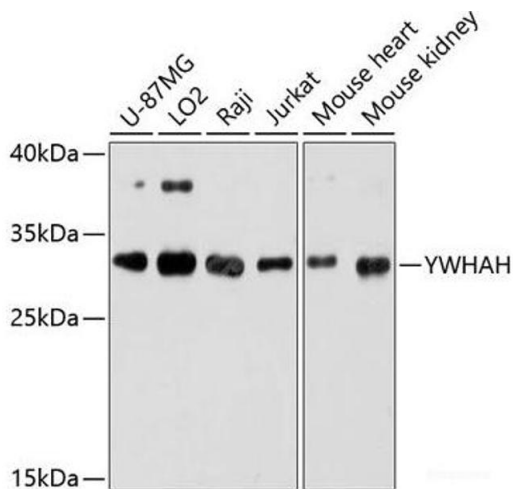
## Handling

Format:	Liquid
Concentration:	1 mg/mL
Buffer:	PBS with 0.02 % sodium azide, 50 % glycerol, pH 7.3
Preservative:	Sodium azide
Precaution of Use:	This product contains Sodium azide: a POISONOUS AND HAZARDOUS SUBSTANCE which should be handled by trained staff only.
Storage:	-20 °C
Storage Comment:	Store at -20°C. Avoid freeze / thaw cycles.



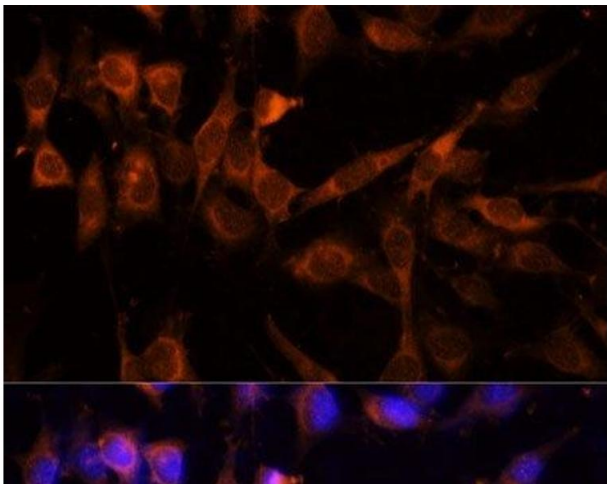
Immunofluorescence

**Image 1.** Immunofluorescence analysis of NIH-3T3 cells using YWHAH Polyclonal Antibody at dilution of 1:100 (40x lens). Blue: DAPI for nuclear staining.



Western Blotting

**Image 2.** Western blot analysis of extracts of various cell lines using YWHAH Polyclonal Antibody at dilution of 1:3000.



Immunofluorescence

**Image 3.** Immunofluorescence analysis of NIH-3T3 cells using YWHAH Polyclonal Antibody at dilution of 1:100 (40x lens). Blue: DAPI for nuclear staining.