



[Go to Product page](#)

Datasheet for ABIN7264745

## anti-Ribonuclease H1 antibody

### 1 Image

#### Overview

Quantity:	200 µL
Target:	Ribonuclease H1 (RNASEH1)
Reactivity:	Human, Mouse, Rat
Host:	Rabbit
Clonality:	Polyclonal
Conjugate:	This Ribonuclease H1 antibody is un-conjugated
Application:	Western Blotting (WB)

#### Product Details

Immunogen:	Recombinant fusion protein of human RNASEH1 (NP_002927.2).
Isotype:	IgG
Characteristics:	Polyclonal Antibody
Purification:	Affinity purification

#### Target Details

Target:	Ribonuclease H1 (RNASEH1)
Alternative Name:	RNASEH1 ( <a href="#">RNASEH1 Products</a> )
Background:	This gene encodes an endonuclease that specifically degrades the RNA of RNA-DNA hybrids and is necessary for DNA replication and repair. This enzyme is present in both mitochondria and nuclei, which are resulted from translation of a single mRNA with two in-frame initiation start codons. The use of the first start codon produces the mitochondrial isoform and the use

## Target Details

---

of the second start codon produces the nuclear isoform. The production of the mitochondrial isoform is modulated by an upstream open reading frame (uORF) which overlaps the first initiation start codon in human. An alternately spliced transcript variant has been found which encodes a shorter isoform. This gene has three pseudogenes, two of them are at different locations of chromosome 17 and one of them is on chromosome 1q32.2.

---

Molecular Weight: Observed\_MW: 37 kDa  
Calculated\_MW: 32 kDa

---

Gene ID: 246243

---

UniProt: [O60930](#)

## Application Details

---

Application Notes: WB 1:500-1:2000

---

Restrictions: For Research Use only

## Handling

---

Format: Liquid

---

Concentration: 1 mg/mL

---

Buffer: PBS with 0.02 % sodium azide, 50 % glycerol, pH 7.3

---

Preservative: Sodium azide

---

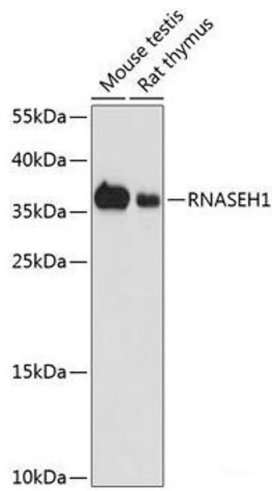
Precaution of Use: This product contains Sodium azide: a POISONOUS AND HAZARDOUS SUBSTANCE which should be handled by trained staff only.

---

Storage: -20 °C

---

Storage Comment: Store at -20°C. Avoid freeze / thaw cycles.



### Western Blotting

**Image 1.** Western blot analysis of extracts of various cell lines using RNASEH1 Polyclonal Antibody at dilution of 1:1000.