

Datasheet for ABIN7264771

anti-SQRDL antibody[Go to Product page](#)**1** Image

Overview

Quantity:	200 µL
Target:	SQRDL
Reactivity:	Human, Rat, Mouse
Host:	Rabbit
Clonality:	Polyclonal
Conjugate:	This SQRDL antibody is un-conjugated
Application:	Western Blotting (WB)

Product Details

Immunogen:	Recombinant fusion protein of human SQRDL (NP_067022.1).
Isotype:	IgG
Characteristics:	Polyclonal Antibody
Purification:	Affinity purification

Target Details

Target:	SQRDL
Alternative Name:	SQRDL (SQRDL Products)
Background:	The protein encoded by this gene may function in mitochondria to catalyze the conversion of sulfide to persulfides, thereby decreasing toxic concentrations of sulfide. Alternative splicing results in multiple transcript variants that encode the same protein.

Target Details

Molecular Weight:	Observed_MW: 48 kDa
	Calculated_MW: 49 kDa
Gene ID:	58472
UniProt:	Q9Y6N5

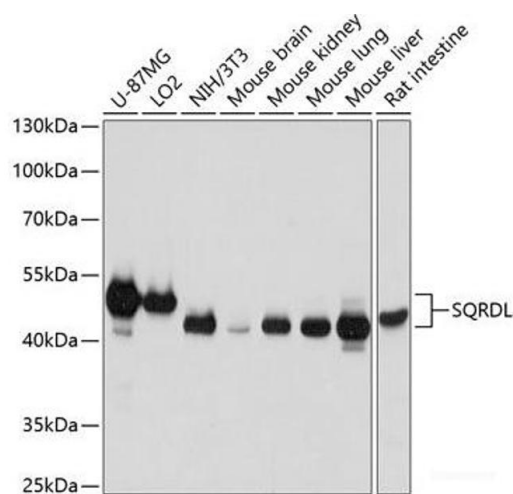
Application Details

Application Notes:	WB 1:1000-1:2000
Restrictions:	For Research Use only

Handling

Format:	Liquid
Concentration:	1 mg/mL
Buffer:	PBS with 0.02 % sodium azide, 50 % glycerol, pH 7.3
Preservative:	Sodium azide
Precaution of Use:	This product contains Sodium azide: a POISONOUS AND HAZARDOUS SUBSTANCE which should be handled by trained staff only.
Storage:	-20 °C
Storage Comment:	Store at -20°C. Avoid freeze / thaw cycles.

Images



Western Blotting

Image 1. Western blot analysis of extracts of various cell lines using SQRDL Polyclonal Antibody at dilution of 1:3000.