

Datasheet for ABIN7264787

anti-SRR antibody[Go to Product page](#)**1** Image

Overview

Quantity:	200 µL
Target:	SRR
Reactivity:	Rat
Host:	Rabbit
Clonality:	Polyclonal
Conjugate:	This SRR antibody is un-conjugated
Application:	Western Blotting (WB)

Product Details

Immunogen:	Recombinant fusion protein of human SRR (NP_068766.1).
Isotype:	IgG
Characteristics:	Polyclonal Antibody
Purification:	Affinity purification

Target Details

Target:	SRR
Alternative Name:	SRR (SRR Products)
Background:	SRR (Serine Racemase) is a Protein Coding gene. Diseases associated with SRR include Robinow Syndrome, Autosomal Recessive 1 and Vitamin E, Familial Isolated Deficiency Of. Among its related pathways are Neuroscience and Metabolism. Gene Ontology (GO) annotations related to this gene include calcium ion binding and magnesium ion binding. An

Target Details

important paralog of this gene is CBS.

Molecular Weight: Observed_MW: 37 kDa
Calculated_MW: 36 kDa

Gene ID: 63826

UniProt: [Q9GZT4](#)

Application Details

Application Notes: WB 1:500-1:2000

Restrictions: For Research Use only

Handling

Format: Liquid

Concentration: 1 mg/mL

Buffer: PBS with 0.02 % sodium azide, 50 % glycerol, pH 7.3

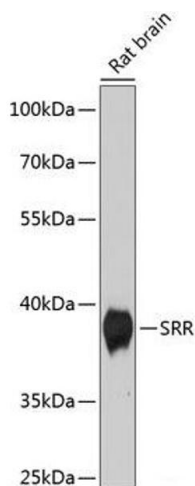
Preservative: Sodium azide

Precaution of Use: This product contains Sodium azide: a POISONOUS AND HAZARDOUS SUBSTANCE which should be handled by trained staff only.

Storage: -20 °C

Storage Comment: Store at -20°C. Avoid freeze / thaw cycles.

Images



Western Blotting

Image 1. Western blot analysis of extracts of Rat brain using SRR Polyclonal Antibody at dilution of 1:1000.