

Datasheet for ABIN7264797

**anti-SLC34A2 antibody****1** Image[Go to Product page](#)

## Overview

Quantity:	200 µL
Target:	SLC34A2
Reactivity:	Human, Mouse, Rat
Host:	Rabbit
Clonality:	Polyclonal
Conjugate:	This SLC34A2 antibody is un-conjugated
Application:	Western Blotting (WB)

## Product Details

Immunogen:	Recombinant fusion protein of human SLC34A2 (NP_001171469.1).
Isotype:	IgG
Characteristics:	Polyclonal Antibody
Purification:	Affinity purification

## Target Details

Target:	SLC34A2
Alternative Name:	SLC34A2 ( <a href="#">SLC34A2 Products</a> )
Background:	<p>The protein encoded by this gene is a pH -sensitive sodium-dependent phosphate transporter. Phosphate uptake is increased at lower pH . Defects in this gene are a cause of pulmonary alveolar microlithiasis. Three transcript variants encoding two different isoforms have been found for this gene.</p>

## Target Details

Molecular Weight:	Observed_MW: 76 kDa
	Calculated_MW: 75 kDa
Gene ID:	10568
UniProt:	<a href="#">O95436</a>

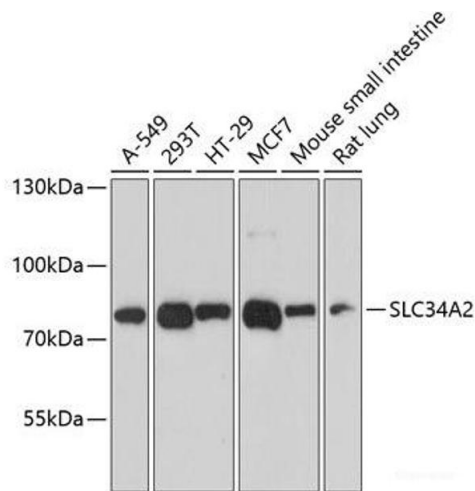
## Application Details

Application Notes:	WB 1:500-1:2000
Restrictions:	For Research Use only

## Handling

Format:	Liquid
Concentration:	1 mg/mL
Buffer:	PBS with 0.02 % sodium azide, 50 % glycerol, pH 7.3
Preservative:	Sodium azide
Precaution of Use:	This product contains Sodium azide: a POISONOUS AND HAZARDOUS SUBSTANCE which should be handled by trained staff only.
Storage:	-20 °C
Storage Comment:	Store at -20°C. Avoid freeze / thaw cycles.

## Images



### Western Blotting

**Image 1.** Western blot analysis of extracts of various cell lines using SLC34A2 Polyclonal Antibody at dilution of 1:3000.