

Datasheet for ABIN7264809

anti-PLA2G6 antibody[Go to Product page](#)**1** Image

Overview

Quantity:	200 µL
Target:	PLA2G6
Reactivity:	Rat
Host:	Rabbit
Clonality:	Polyclonal
Conjugate:	This PLA2G6 antibody is un-conjugated
Application:	Western Blotting (WB)

Product Details

Immunogen:	A synthetic peptide of human PLA2G6 (NP_003551.2).
Isotype:	IgG
Characteristics:	Polyclonal Antibody
Purification:	Affinity purification

Target Details

Target:	PLA2G6
Alternative Name:	PLA2G6 (PLA2G6 Products)
Background:	The protein encoded by this gene is an A2 phospholipase, a class of enzyme that catalyzes the release of fatty acids from phospholipids. The encoded protein may play a role in phospholipid remodelling, arachidonic acid release, leukotriene and prostaglandin synthesis, fas-mediated apoptosis, and transmembrane ion flux in glucose-stimulated B-cells. Several transcript

Target Details

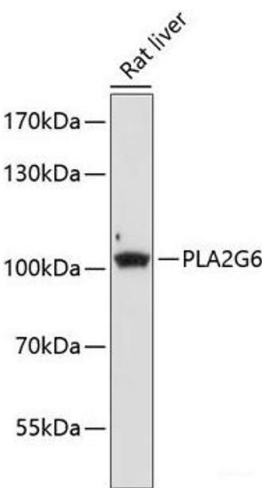
	variants encoding multiple isoforms have been described, but the full-length nature of only three of them have been determined to date.
Molecular Weight:	Observed_MW: 105 kDa Calculated_MW: 46 kDa/53 kDa/84 kDa/89 kDa
Gene ID:	8398
UniProt:	O60733
Pathways:	Positive Regulation of Peptide Hormone Secretion

Application Details

Application Notes:	WB 1:500-1:2000
Restrictions:	For Research Use only

Handling

Format:	Liquid
Concentration:	1 mg/mL
Buffer:	PBS with 0.02 % sodium azide, 50 % glycerol, pH 7.3
Preservative:	Sodium azide
Precaution of Use:	This product contains Sodium azide: a POISONOUS AND HAZARDOUS SUBSTANCE which should be handled by trained staff only.
Storage:	-20 °C
Storage Comment:	Store at -20°C. Avoid freeze / thaw cycles.



Western Blotting

Image 1. Western blot analysis of extracts of Rat liver using PLA2G6 Polyclonal Antibody at dilution of 1:1000.