

Datasheet for ABIN7264811

anti-IMPDH1 antibody[Go to Product page](#)**1** Image

Overview

Quantity:	200 µL
Target:	IMPDH1
Reactivity:	Human, Mouse, Rat
Host:	Rabbit
Clonality:	Polyclonal
Conjugate:	This IMPDH1 antibody is un-conjugated
Application:	Western Blotting (WB)

Product Details

Immunogen:	Recombinant fusion protein of human IMPDH1 (NP_899066.1).
Isotype:	IgG
Characteristics:	Polyclonal Antibody
Purification:	Affinity purification

Target Details

Target:	IMPDH1
Alternative Name:	IMPDH1 (IMPDH1 Products)
Background:	The protein encoded by this gene acts as a homotetramer to regulate cell growth. The encoded protein is an enzyme that catalyzes the synthesis of xanthine monophosphate (XMP) from inosine-5'-monophosphate (IMP). This is the rate-limiting step in the de novo synthesis of guanine nucleotides. Defects in this gene are a cause of retinitis pigmentosa type 10 (RP10).

Target Details

Several transcript variants encoding different isoforms have been found for this gene.

Molecular Weight: Observed_MW: 55 kDa
Calculated_MW: 52 kDa/54 kDa/55 kDa/60 kDa/63 kDa/64 kDa

Gene ID: 3614

UniProt: [P20839](#)

Pathways: [Ribonucleoside Biosynthetic Process](#)

Application Details

Application Notes: WB 1:1000-1:2000

Restrictions: For Research Use only

Handling

Format: Liquid

Concentration: 1 mg/mL

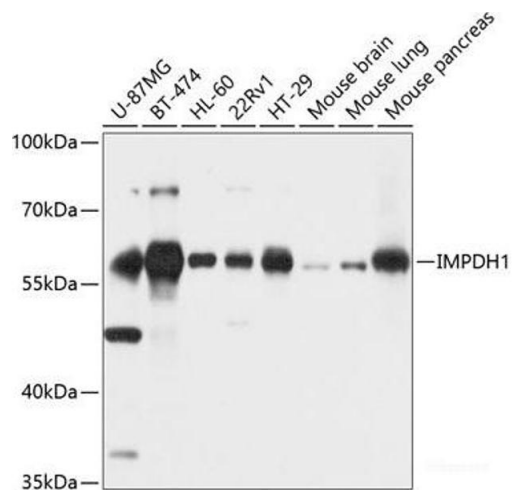
Buffer: PBS with 0.02 % sodium azide, 50 % glycerol, pH 7.3

Preservative: Sodium azide

Precaution of Use: This product contains Sodium azide: a POISONOUS AND HAZARDOUS SUBSTANCE which should be handled by trained staff only.

Storage: -20 °C

Storage Comment: Store at -20°C. Avoid freeze / thaw cycles.



Western Blotting

Image 1. Western blot analysis of extracts of various cell lines using IMPDH1 Polyclonal Antibody at dilution of 1:1000.