

Datasheet for ABIN7264817

anti-MYH6 antibody**3** Images[Go to Product page](#)

Overview

Quantity:	200 µL
Target:	MYH6
Reactivity:	Rat, Mouse
Host:	Rabbit
Clonality:	Polyclonal
Conjugate:	This MYH6 antibody is un-conjugated
Application:	Western Blotting (WB), Immunofluorescence (IF)

Product Details

Immunogen:	Recombinant fusion protein of human MYH6 (NP_002462.2).
Isotype:	IgG
Characteristics:	Polyclonal Antibody
Purification:	Affinity purification

Target Details

Target:	MYH6
Alternative Name:	MYH6 (MYH6 Products)
Background:	Cardiac muscle myosin is a hexamer consisting of two heavy chain subunits, two light chain subunits, and two regulatory subunits. This gene encodes the alpha heavy chain subunit of cardiac myosin. The gene is located approximately 4kb downstream of the gene encoding the beta heavy chain subunit of cardiac myosin. Mutations in this gene cause familial hypertrophic

Target Details

	cardiomyopathy and atrial septal defect 3.
Molecular Weight:	Observed_MW: 255 kDa Calculated_MW: 223 kDa
Gene ID:	4624
UniProt:	P13533

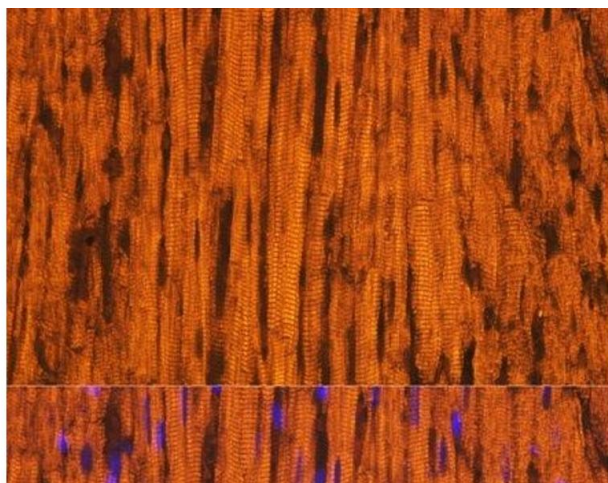
Application Details

Application Notes:	WB 1:500-1:2000 IF 1:50-1:200
Restrictions:	For Research Use only

Handling

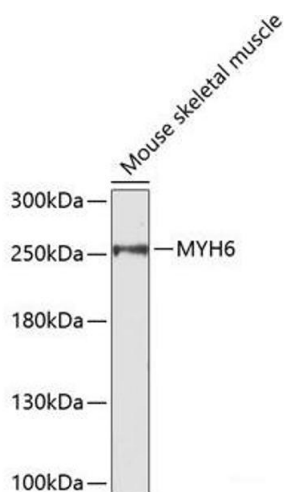
Format:	Liquid
Concentration:	1 mg/mL
Buffer:	PBS with 0.02 % sodium azide, 50 % glycerol, pH 7.3
Preservative:	Sodium azide
Precaution of Use:	This product contains Sodium azide: a POISONOUS AND HAZARDOUS SUBSTANCE which should be handled by trained staff only.
Storage:	-20 °C
Storage Comment:	Store at -20°C. Avoid freeze / thaw cycles.

Images



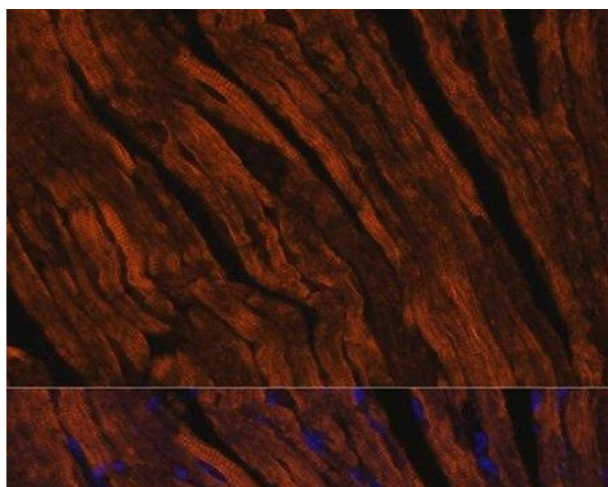
Immunofluorescence

Image 1. Immunofluorescence analysis of Rat heart using MYH6 Polyclonal Antibody at dilution of 1:100. Blue: DAPI for nuclear staining.



Western Blotting

Image 2. Western blot analysis of extracts of Mouse skeletal muscle using MYH6 Polyclonal Antibody.



Immunofluorescence

Image 3. Immunofluorescence analysis of Mouse heart using MYH6 Polyclonal Antibody at dilution of 1:100. Blue: DAPI for nuclear staining.