

Datasheet for ABIN7264821

anti-PHLPP1 antibody[Go to Product page](#)**1** Image

Overview

Quantity:	200 µL
Target:	PHLPP1
Reactivity:	Human, Mouse, Rat
Host:	Rabbit
Clonality:	Polyclonal
Conjugate:	This PHLPP1 antibody is un-conjugated
Application:	Immunofluorescence (IF)

Product Details

Immunogen:	Recombinant fusion protein of human PHLPP1 (NP_919431.2).
Isotype:	IgG
Characteristics:	Polyclonal Antibody
Purification:	Affinity purification

Target Details

Target:	PHLPP1
Alternative Name:	PHLPP1 (PHLPP1 Products)
Background:	This gene encodes a member of the serine/threonine phosphatase family. The encoded protein promotes apoptosis by dephosphorylating and inactivating the serine/threonine kinase Akt, and functions as a tumor suppressor in multiple types of cancer. Increased expression of this gene may also play a role in obesity and type 2 diabetes by interfering with Akt-mediated insulin

Target Details

	signaling.
Gene ID:	23239
UniProt:	O60346
Pathways:	PI3K-Akt Signaling , Fc-epsilon Receptor Signaling Pathway , Neurotrophin Signaling Pathway

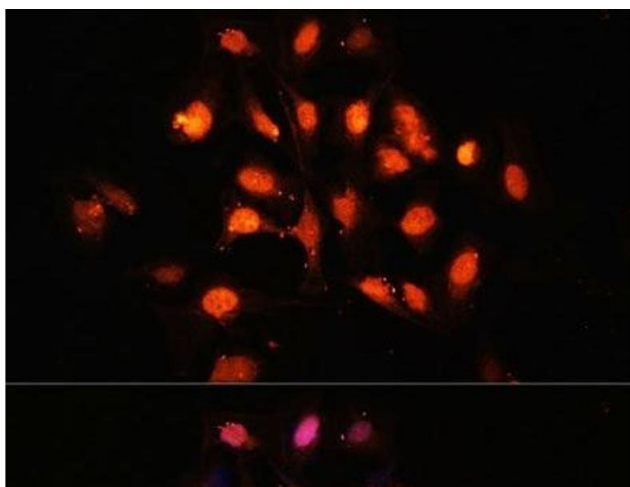
Application Details

Application Notes:	IF 1:50-1:200
Restrictions:	For Research Use only

Handling

Format:	Liquid
Concentration:	1 mg/mL
Buffer:	PBS with 0.02 % sodium azide, 50 % glycerol, pH 7.3
Preservative:	Sodium azide
Precaution of Use:	This product contains Sodium azide: a POISONOUS AND HAZARDOUS SUBSTANCE which should be handled by trained staff only.
Storage:	-20 °C
Storage Comment:	Store at -20°C. Avoid freeze / thaw cycles.

Images



Immunofluorescence

Image 1. Immunofluorescence analysis of U-2 OS cells using PHLPP1 Polyclonal Antibody at dilution of 1:100 (40x lens). Blue: DAPI for nuclear staining.