



Datasheet for ABIN7264866 anti-CHRN2 antibody



[Go to Product page](#)

1 Image

Overview

| | |
|--------------|--------------------------------------|
| Quantity: | 200 µL |
| Target: | CHRN2 |
| Reactivity: | Human, Mouse, Rat |
| Host: | Rabbit |
| Clonality: | Polyclonal |
| Conjugate: | This CHRN2 antibody is un-conjugated |
| Application: | Immunohistochemistry (IHC) |

Product Details

| | |
|------------------|--|
| Immunogen: | Recombinant fusion protein of human CHRN2 (NP_000739.1). |
| Isotype: | IgG |
| Characteristics: | Polyclonal Antibody |
| Purification: | Affinity purification |

Target Details

| | |
|-------------------|---|
| Target: | CHRN2 |
| Alternative Name: | CHRN2 (CHRN2 Products) |
| Background: | Neuronal acetylcholine receptors are homo- or heteropentameric complexes composed of homologous alpha and beta subunits. They belong to a superfamily of ligand-gated ion channels which allow the flow of sodium and potassium across the plasma membrane in response to ligands such as acetylcholine and nicotine. This gene encodes one of several beta |

Target Details

subunits. Mutations in this gene are associated with autosomal dominant nocturnal frontal lobe epilepsy.

Gene ID: 1141

UniProt: [P17787](#)

Pathways: [Sensory Perception of Sound, Feeding Behaviour](#)

Application Details

Application Notes: IHC 1:50-1:100

Restrictions: For Research Use only

Handling

Format: Liquid

Concentration: 1 mg/mL

Buffer: PBS with 0.02 % sodium azide, 50 % glycerol, pH 7.3

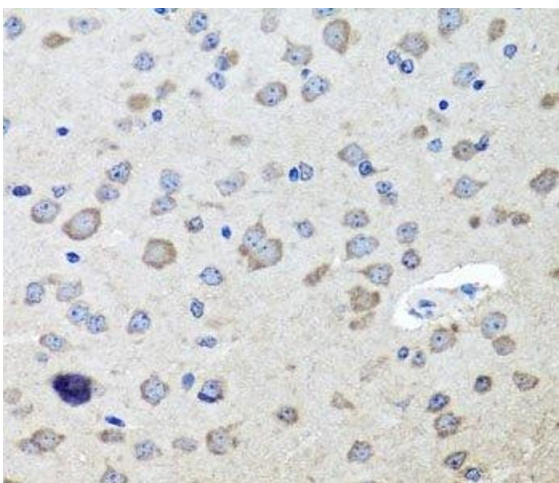
Preservative: Sodium azide

Precaution of Use: This product contains Sodium azide: a POISONOUS AND HAZARDOUS SUBSTANCE which should be handled by trained staff only.

Storage: -20 °C

Storage Comment: Store at -20°C. Avoid freeze / thaw cycles.

Images



Immunohistochemistry (Paraffin-embedded Sections)

Image 1. Immunohistochemistry of paraffin-embedded Mouse brain using CHRNB2 Polyclonal Antibody at dilution of 1:100 (40x lens).