

Datasheet for ABIN7264872

**anti-GIPR antibody**[Go to Product page](#)**1** Image

## Overview

Quantity:	200 µL
Target:	GIPR
Reactivity:	Human, Mouse, Rat
Host:	Rabbit
Clonality:	Polyclonal
Conjugate:	This GIPR antibody is un-conjugated
Application:	Western Blotting (WB)

## Product Details

Immunogen:	Recombinant fusion protein of human GIPR (NP_000155.1).
Isotype:	IgG
Characteristics:	Polyclonal Antibody
Purification:	Affinity purification

## Target Details

Target:	GIPR
Alternative Name:	GIPR ( <a href="#">GIPR Products</a> )
Background:	This gene encodes a G-protein coupled receptor for gastric inhibitory polypeptide (GIP), which was originally identified as an activity in gut extracts that inhibited gastric acid secretion and gastrin release, but subsequently was demonstrated to stimulate insulin release in the presence of elevated glucose. Mice lacking this gene exhibit higher blood glucose levels with impaired

## Target Details

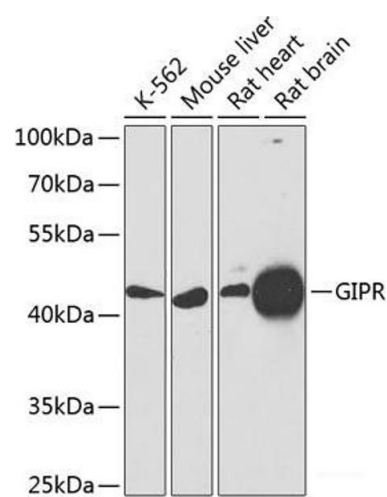
	initial insulin response after oral glucose load. Defect in this gene thus may contribute to the pathogenesis of diabetes.
Molecular Weight:	Observed_MW: 45 kDa Calculated_MW: 48 kDa/49 kDa/53 kDa
Gene ID:	2696
UniProt:	<a href="#">P48546</a>
Pathways:	<a href="#">Positive Regulation of Peptide Hormone Secretion</a> , <a href="#">cAMP Metabolic Process</a> , <a href="#">Regulation of G-Protein Coupled Receptor Protein Signaling</a>

## Application Details

Application Notes:	WB 1:500-1:2000
Restrictions:	For Research Use only

## Handling

Format:	Liquid
Concentration:	1 mg/mL
Buffer:	PBS with 0.02 % sodium azide, 50 % glycerol, pH 7.3
Preservative:	Sodium azide
Precaution of Use:	This product contains Sodium azide: a POISONOUS AND HAZARDOUS SUBSTANCE which should be handled by trained staff only.
Storage:	-20 °C
Storage Comment:	Store at -20°C. Avoid freeze / thaw cycles.



Western Blotting

**Image 1.** Western blot analysis of extracts of various cell lines using GIPR Polyclonal Antibody at dilution of 1:1000.