



Datasheet for ABIN7264920 **anti-ELP3/KAT9 antibody**



[Go to Product page](#)

3 Images

Overview

Quantity:	200 µL
Target:	ELP3/KAT9 (ELP3)
Reactivity:	Human, Mouse, Rat
Host:	Rabbit
Clonality:	Polyclonal
Conjugate:	This ELP3/KAT9 antibody is un-conjugated
Application:	Western Blotting (WB), Immunohistochemistry (IHC)

Product Details

Immunogen:	Recombinant fusion protein of human ELP3 (NP_060561.3).
Isotype:	IgG
Characteristics:	Polyclonal Antibody
Purification:	Affinity purification

Target Details

Target:	ELP3/KAT9 (ELP3)
Alternative Name:	ELP3 (ELP3 Products)
Background:	ELP3 is the catalytic subunit of the histone acetyltransferase elongator complex, which contributes to transcript elongation and also regulates the maturation of projection neurons. Catalytic histone acetyltransferase subunit of the RNA polymerase II elongator complex, which is a component of the RNA polymerase II (Pol II) holoenzyme and is involved in transcriptional

Target Details

elongation. Elongator may play a role in chromatin remodeling and is involved in acetylation of histones H3 and probably H4. May also have a methyltransferase activity. Involved in cell migration.

Molecular Weight: Observed_MW: 62 kDa
Calculated_MW: 49 kDa/52 kDa/60 kDa/62 kDa

Gene ID: 55140

UniProt: [Q9H9T3](#)

Application Details

Application Notes: WB 1:500-1:2000 IHC 1:50-1:200

Restrictions: For Research Use only

Handling

Format: Liquid

Concentration: 1 mg/mL

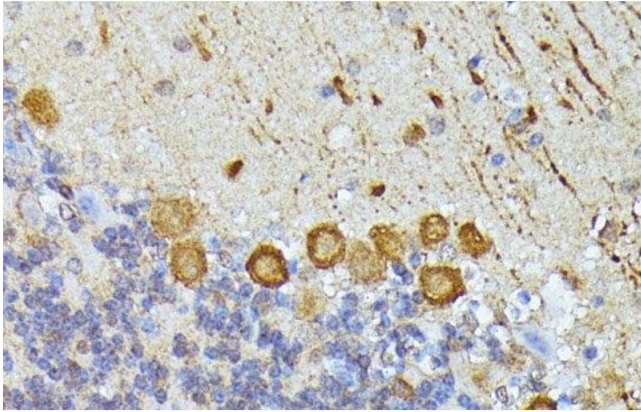
Buffer: PBS with 0.02 % sodium azide, 50 % glycerol, pH 7.3

Preservative: Sodium azide

Precaution of Use: This product contains Sodium azide: a POISONOUS AND HAZARDOUS SUBSTANCE which should be handled by trained staff only.

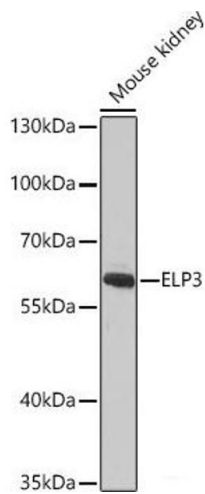
Storage: -20 °C

Storage Comment: Store at -20°C. Avoid freeze / thaw cycles.



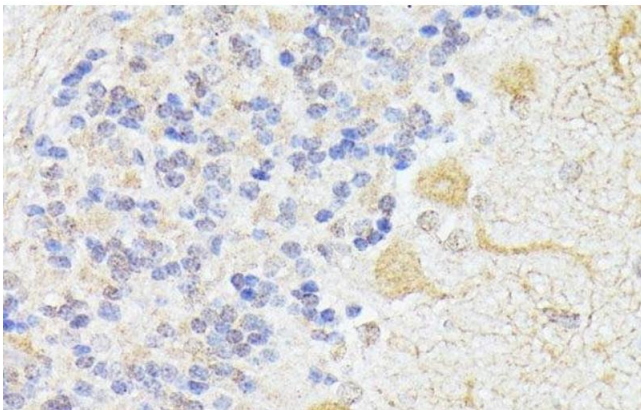
Immunohistochemistry (Paraffin-embedded Sections)

Image 1. Immunohistochemistry of paraffin-embedded Mouse cerebellum using ELP3 Polyclonal Antibody at dilution of 1:100 (40x lens).



Western Blotting

Image 2. Western blot analysis of extracts of Mouse kidney using ELP3 Polyclonal Antibody at dilution of 1:1000.



Immunohistochemistry (Paraffin-embedded Sections)

Image 3. Immunohistochemistry of paraffin-embedded Rat cerebellum using ELP3 Polyclonal Antibody at dilution of 1:100 (40x lens).