

Datasheet for ABIN7264936

anti-STRA13 antibody[Go to Product page](#)**1** Image

Overview

Quantity:	200 µL
Target:	STRA13
Reactivity:	Human
Host:	Rabbit
Clonality:	Polyclonal
Conjugate:	This STRA13 antibody is un-conjugated
Application:	Western Blotting (WB)

Product Details

Immunogen:	Recombinant fusion protein of human STRA13 (NP_659435.2).
Isotype:	IgG
Characteristics:	Polyclonal Antibody
Purification:	Affinity purification

Target Details

Target:	STRA13
Alternative Name:	STRA13 (STRA13 Products)
Background:	DNA-binding component of the Fanconi anemia (FA) core complex. Required for the normal activation of the FA pathway, leading to monoubiquitination of the FANCI-FANCD2 complex in response to DNA damage, cellular resistance to DNA cross-linking drugs, and prevention of chromosomal breakage. In complex with CENPS (MHF heterodimer), crucial cofactor for

Target Details

FANCM in both binding and ATP-dependent remodeling of DNA. Stabilizes FANCM. In complex with CENPS and FANCM (but not other FANC proteins), rapidly recruited to blocked forks and promotes gene conversion at blocked replication forks (PubMed:20347428, PubMed:20347429). In complex with CENPS, CENPT and CENPW (CENP-T-W-S-X heterotetramer), involved in the formation of a functional kinetochore outer plate, which is essential for kinetochore-microtubule attachment and faithful mitotic progression. As a component of MHF and CENP-T-W-S-X complexes, binds DNA and bends it to form a nucleosome-like structure.

Molecular Weight: Observed_MW: 14 kDa
Calculated_MW: 6 kDa/7 kDa/8 kDa

Gene ID: 201254

UniProt: [A8MT69](#)

Application Details

Application Notes: WB 1:500-1:2000

Restrictions: For Research Use only

Handling

Format: Liquid

Concentration: 1 mg/mL

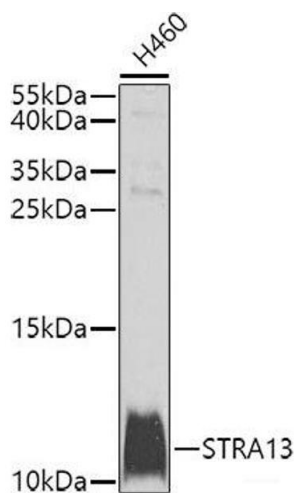
Buffer: PBS with 0.02 % sodium azide, 50 % glycerol, pH 7.3

Preservative: Sodium azide

Precaution of Use: This product contains Sodium azide: a POISONOUS AND HAZARDOUS SUBSTANCE which should be handled by trained staff only.

Storage: -20 °C

Storage Comment: Store at -20°C. Avoid freeze / thaw cycles.



Western Blotting

Image 1. Western blot analysis of extracts of H460 cells using STRA13 Polyclonal Antibody at dilution of 1:1000.