

Datasheet for ABIN7264946  
**anti-ATP5F1D antibody**

## 3 Images

[Go to Product page](#)

## Overview

Quantity:	200 µL
Target:	ATP5F1D
Reactivity:	Human, Mouse, Rat
Host:	Rabbit
Clonality:	Polyclonal
Conjugate:	This ATP5F1D antibody is un-conjugated
Application:	Immunofluorescence (IF)

## Product Details

Immunogen:	Recombinant fusion protein of human ATP5D (NP_001678.1).
Isotype:	IgG
Characteristics:	Polyclonal Antibody
Purification:	Affinity purification

## Target Details

Target:	ATP5F1D
Alternative Name:	ATP5D ( <a href="#">ATP5F1D Products</a> )
Background:	This gene encodes a subunit of mitochondrial ATP synthase. Mitochondrial ATP synthase catalyzes ATP synthesis, utilizing an electrochemical gradient of protons across the inner membrane during oxidative phosphorylation. ATP synthase is composed of two linked multi-subunit complexes: the soluble catalytic core, F1, and the membrane-spanning component, Fo,

## Target Details

comprising the proton channel. The catalytic portion of mitochondrial ATP synthase consists of 5 different subunits (alpha, beta, gamma, delta, and epsilon) assembled with a stoichiometry of 3 alpha, 3 beta, and a single representative of the other 3. The proton channel consists of three main subunits (a, b, c). This gene encodes the delta subunit of the catalytic core. Alternatively spliced transcript variants encoding the same isoform have been identified.

Gene ID: 513

UniProt: [P30049](#)

Pathways: [Proton Transport](#), [Ribonucleoside Biosynthetic Process](#)

## Application Details

Application Notes: IF 1:50-1:200

Restrictions: For Research Use only

## Handling

Format: Liquid

Concentration: 1 mg/mL

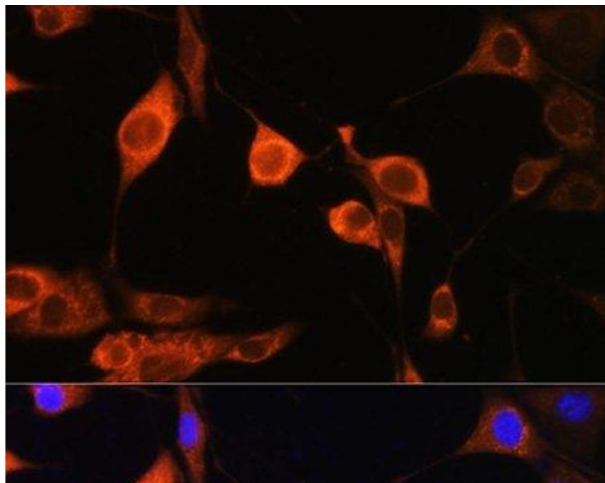
Buffer: PBS with 0.02 % sodium azide, 50 % glycerol, pH 7.3

Preservative: Sodium azide

Precaution of Use: This product contains Sodium azide: a POISONOUS AND HAZARDOUS SUBSTANCE which should be handled by trained staff only.

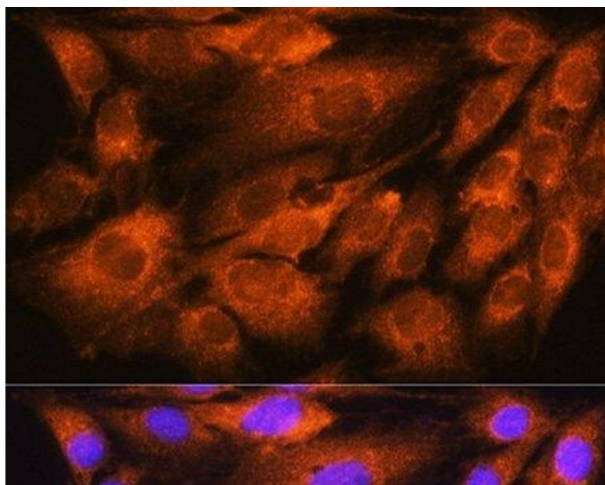
Storage: -20 °C

Storage Comment: Store at -20°C. Avoid freeze / thaw cycles.



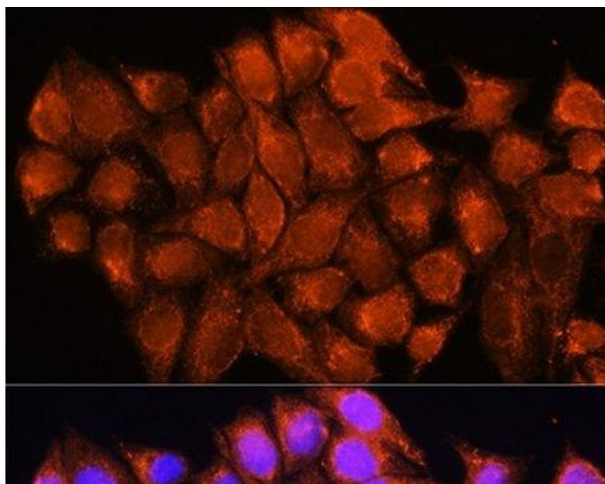
#### Immunofluorescence

**Image 1.** Immunofluorescence analysis of NIH/3T3 cells using ATP5D Polyclonal Antibody at dilution of 1:100. Blue: DAPI for nuclear staining.



#### Immunofluorescence

**Image 2.** Immunofluorescence analysis of C6 cells using ATP5D Polyclonal Antibody at dilution of 1:100. Blue: DAPI for nuclear staining.



#### Immunofluorescence

**Image 3.** Immunofluorescence analysis of HeLa cells using ATP5D Polyclonal Antibody at dilution of 1:100. Blue: DAPI for nuclear staining.