

Datasheet for ABIN7264966
anti-alpha 2 Antiplasmin antibody

2 Images

[Go to Product page](#)

Overview

Quantity:	200 µL
Target:	alpha 2 Antiplasmin (SERPINF2)
Reactivity:	Human, Rat
Host:	Rabbit
Clonality:	Polyclonal
Conjugate:	This alpha 2 Antiplasmin antibody is un-conjugated
Application:	Western Blotting (WB), Immunohistochemistry (IHC)

Product Details

Immunogen:	Recombinant fusion protein of human SERPINF2 (NP_001159392.1).
Isotype:	IgG
Characteristics:	Polyclonal Antibody
Purification:	Affinity purification

Target Details

Target:	alpha 2 Antiplasmin (SERPINF2)
Alternative Name:	SERPINF2 (SERPINF2 Products)
Background:	<p>This gene encodes a member of the serpin family of serine protease inhibitors. The protein is a major inhibitor of plasmin, which degrades fibrin and various other proteins. Consequently, the proper function of this gene has a major role in regulating the blood clotting pathway.</p> <p>Mutations in this gene result in alpha-2-plasmin inhibitor deficiency, which is characterized by</p>

Target Details

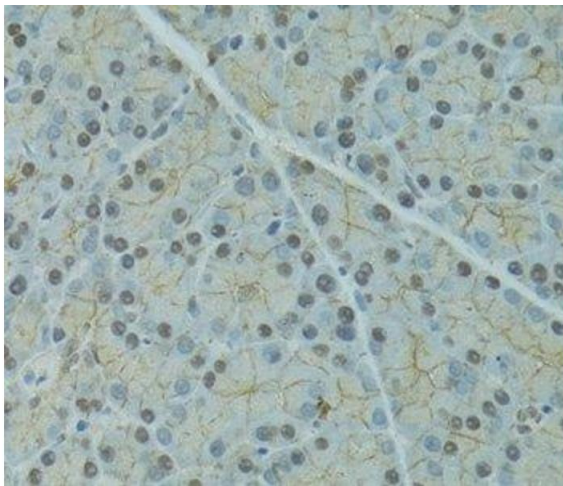
	severe hemorrhagic diathesis. Multiple transcript variants encoding different isoforms have been found for this gene.
Molecular Weight:	Observed_MW: 65 kDa Calculated_MW: 47 kDa/54 kDa
Gene ID:	5345
UniProt:	P08697
Pathways:	Regulation of Systemic Arterial Blood Pressure by Hormones

Application Details

Application Notes:	WB 1:500-1:2000 IHC 1:50-1:100
Restrictions:	For Research Use only

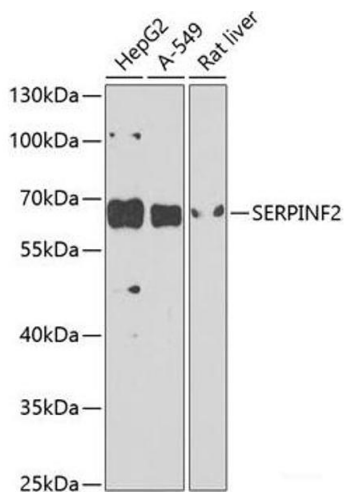
Handling

Format:	Liquid
Concentration:	1 mg/mL
Buffer:	PBS with 0.02 % sodium azide, 50 % glycerol, pH 7.3
Preservative:	Sodium azide
Precaution of Use:	This product contains Sodium azide: a POISONOUS AND HAZARDOUS SUBSTANCE which should be handled by trained staff only.
Storage:	-20 °C
Storage Comment:	Store at -20°C. Avoid freeze / thaw cycles.



Immunohistochemistry (Paraffin-embedded Sections)

Image 1. Immunohistochemistry of paraffin-embedded Rat pancreas using SERPINF2 Polyclonal Antibody at dilution of 1:100 (40x lens).



Western Blotting

Image 2. Western blot analysis of extracts of various cell lines using SERPINF2 Polyclonal Antibody at dilution of 1:1000.