



[Go to Product page](#)

Datasheet for ABIN7264976  
**anti-SLC30A1 antibody**

3 Images

### Overview

Quantity:	200 µL
Target:	SLC30A1
Reactivity:	Human, Mouse, Rat
Host:	Rabbit
Clonality:	Polyclonal
Conjugate:	This SLC30A1 antibody is un-conjugated
Application:	Immunohistochemistry (IHC)

### Product Details

Immunogen:	A synthetic peptide of human SLC30A1 (NP_067017.2).
Isotype:	IgG
Characteristics:	Polyclonal Antibody
Purification:	Affinity purification

### Target Details

Target:	SLC30A1
Alternative Name:	SLC30A1 ( <a href="#">SLC30A1 Products</a> )
Background:	SLC30A1 (Solute Carrier Family 30 Member 1) is a Protein Coding gene. Diseases associated with SLC30A1 include Acrodermatitis Enteropathica, Zinc-Deficiency Type and Epidermodysplasia Verruciformis 1. Among its related pathways are Metal ion SLC transporters and Mineral absorption. Gene Ontology (GO) annotations related to this gene include cation

## Target Details

transmembrane transporter activity and calcium channel inhibitor activity. An important paralog of this gene is SLC30A10.

Gene ID: 7779

UniProt: [Q9Y6M5](#)

Pathways: [Transition Metal Ion Homeostasis](#)

## Application Details

Application Notes: IHC 1:50-1:200

Restrictions: For Research Use only

## Handling

Format: Liquid

Concentration: 1 mg/mL

Buffer: PBS with 0.02 % sodium azide, 50 % glycerol, pH 7.3

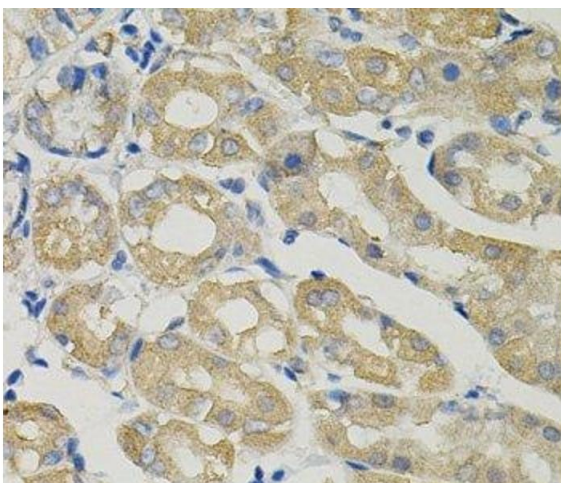
Preservative: Sodium azide

Precaution of Use: This product contains Sodium azide: a POISONOUS AND HAZARDOUS SUBSTANCE which should be handled by trained staff only.

Storage: -20 °C

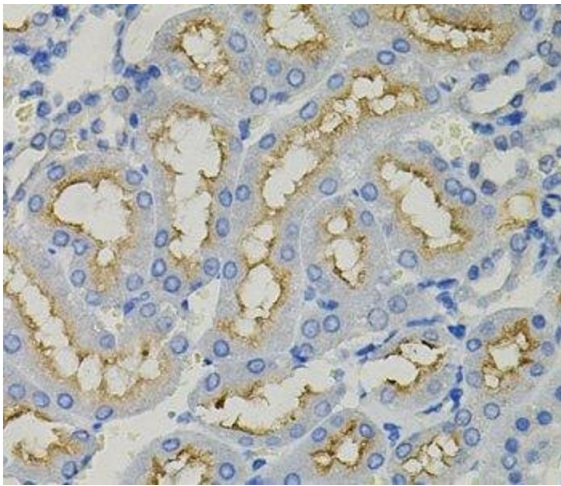
Storage Comment: Store at -20°C. Avoid freeze / thaw cycles.

## Images



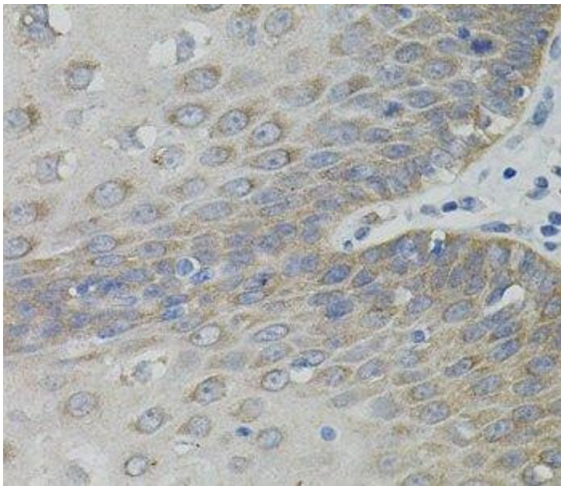
### Immunohistochemistry (Paraffin-embedded Sections)

**Image 1.** Immunohistochemistry of paraffin-embedded Human stomach using SLC30A1 Polyclonal Antibody



**Immunohistochemistry (Paraffin-embedded Sections)**

**Image 2.** Immunohistochemistry of paraffin-embedded Rat kidney using SLC30A1 Polyclonal Antibody



**Immunohistochemistry (Paraffin-embedded Sections)**

**Image 3.** Immunohistochemistry of paraffin-embedded Human esophagus using SLC30A1 Polyclonal Antibody