



Datasheet for ABIN7265002 anti-UBE2Q2 antibody



[Go to Product page](#)

1 Image

Overview

| | |
|--------------|---------------------------------------|
| Quantity: | 200 µL |
| Target: | UBE2Q2 |
| Reactivity: | Human, Mouse |
| Host: | Rabbit |
| Clonality: | Polyclonal |
| Conjugate: | This UBE2Q2 antibody is un-conjugated |
| Application: | Western Blotting (WB) |

Product Details

| | |
|------------------|-----------------------------------------------------------|
| Immunogen: | Recombinant fusion protein of human UBE2Q2 (NP_775740.1). |
| Isotype: | IgG |
| Characteristics: | Polyclonal Antibody |
| Purification: | Affinity purification |

Target Details

| | |
|-------------------|------------------------------------------------------------------------------------------------------------------------------------------------------------------------------------------------------------------------------------------------------------------------------------------------------------------------------------------------------------------|
| Target: | UBE2Q2 |
| Alternative Name: | UBE2Q2 (UBE2Q2 Products) |
| Background: | UBE2Q2 (Ubiquitin Conjugating Enzyme E2 Q2) is a Protein Coding gene. Diseases associated with UBE2Q2 include Hypophosphatemic Nephrolithiasis/Osteoporosis. Among its related pathways are Metabolism of proteins and Innate Immune System. Gene Ontology (GO) annotations related to this gene include ligase activity and acid-amino acid ligase activity. An |

Target Details

important paralog of this gene is UBE2Q1.

Molecular Weight: Observed_MW: 43 kDa
Calculated_MW: 36 kDa/38 kDa/40 kDa/42 kDa

Gene ID: 92912

UniProt: [Q8WVN8](#)

Application Details

Application Notes: WB 1:500-1:2000

Restrictions: For Research Use only

Handling

Format: Liquid

Concentration: 1 mg/mL

Buffer: PBS with 0.02 % sodium azide, 50 % glycerol, pH 7.3

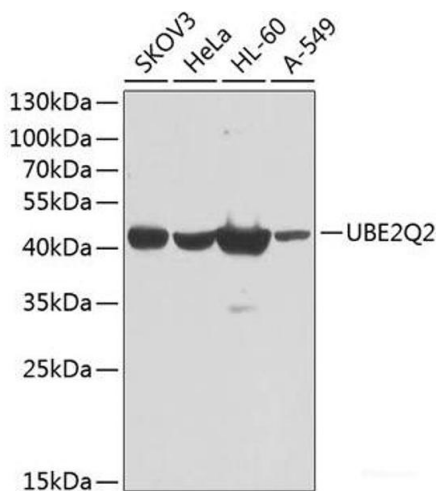
Preservative: Sodium azide

Precaution of Use: This product contains Sodium azide: a POISONOUS AND HAZARDOUS SUBSTANCE which should be handled by trained staff only.

Storage: -20 °C

Storage Comment: Store at -20°C. Avoid freeze / thaw cycles.

Images



Western Blotting

Image 1. Western blot analysis of extracts of various cell lines using UBE2Q2 Polyclonal Antibody at dilution of 1:1000.