

Datasheet for ABIN7265004
anti-SLC2A13 antibody

3 Images

[Go to Product page](#)

Overview

Quantity:	200 µL
Target:	SLC2A13
Reactivity:	Human, Mouse, Rat
Host:	Rabbit
Clonality:	Polyclonal
Conjugate:	This SLC2A13 antibody is un-conjugated
Application:	Immunohistochemistry (IHC)

Product Details

Immunogen:	Recombinant fusion protein of human SLC2A13 (NP_443117.3).
Isotype:	IgG
Characteristics:	Polyclonal Antibody
Purification:	Affinity purification

Target Details

Target:	SLC2A13
Alternative Name:	SLC2A13 (SLC2A13 Products)
Background:	SLC2A13 (Solute Carrier Family 2 Member 13) is a Protein Coding gene. Diseases associated with SLC2A13 include Arterial Tortuosity Syndrome. Among its related pathways are NRF2 pathway and Transport of glucose and other sugars, bile salts and organic acids, metal ions and amine compounds. Gene Ontology (GO) annotations related to this gene include

Target Details

carbohydrate:proton symporter activity. An important paralog of this gene is SLC2A2.

Gene ID: 114134

UniProt: [Q96QE2](#)

Application Details

Application Notes: IHC 1:50-1:200

Restrictions: For Research Use only

Handling

Format: Liquid

Concentration: 1 mg/mL

Buffer: PBS with 0.02 % sodium azide, 50 % glycerol, pH 7.3

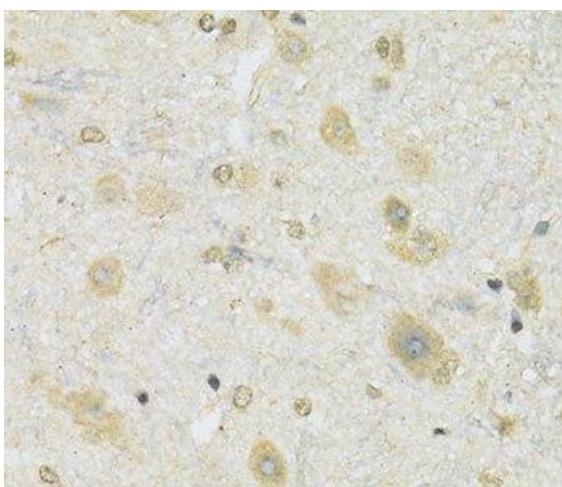
Preservative: Sodium azide

Precaution of Use: This product contains Sodium azide: a POISONOUS AND HAZARDOUS SUBSTANCE which should be handled by trained staff only.

Storage: -20 °C

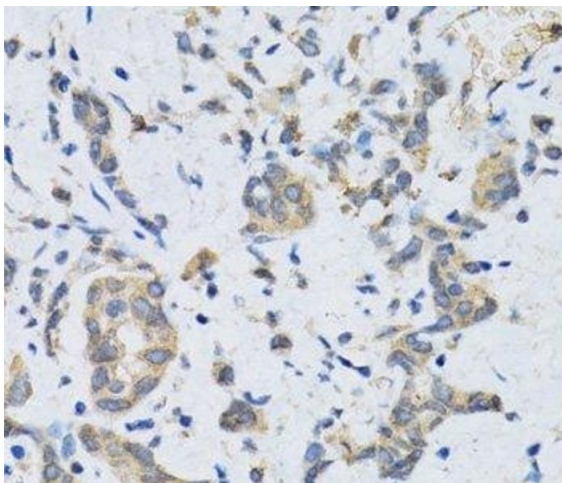
Storage Comment: Store at -20°C. Avoid freeze / thaw cycles.

Images



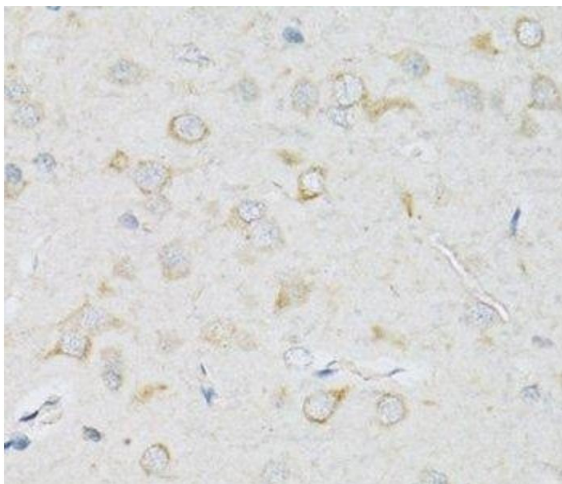
Immunohistochemistry (Paraffin-embedded Sections)

Image 1. Immunohistochemistry of paraffin-embedded Mouse spinal cord using SLC2A13 Polyclonal Antibody at dilution of 1:100 (40x lens).



Immunohistochemistry (Paraffin-embedded Sections)

Image 2. Immunohistochemistry of paraffin-embedded Human gastric cancer using SLC2A13 Polyclonal Antibody at dilution of 1:100 (40x lens).



Immunohistochemistry (Paraffin-embedded Sections)

Image 3. Immunohistochemistry of paraffin-embedded Rat brain using SLC2A13 Polyclonal Antibody at dilution of 1:100 (40x lens).