

Datasheet for ABIN7265020
anti-CDK1 antibody (pTyr15)

6 Images

[Go to Product page](#)

Overview

Quantity:	200 µL
Target:	CDK1
Binding Specificity:	pTyr15
Reactivity:	Human, Mouse, Rat
Host:	Rabbit
Clonality:	Polyclonal
Conjugate:	This CDK1 antibody is un-conjugated
Application:	Western Blotting (WB), Immunohistochemistry (IHC), Immunofluorescence (IF)

Product Details

Immunogen:	A synthetic phosphorylated peptide around Y15 of human CDK1 (NP_001777.1).
Isotype:	IgG
Characteristics:	Phosphorylated antibody
Purification:	Affinity purification

Target Details

Target:	CDK1
Alternative Name:	CDK1 (CDK1 Products)
Background:	The protein encoded by this gene is a member of the Ser/Thr protein kinase family. This protein is a catalytic subunit of the highly conserved protein kinase complex known as M-phase

Target Details

promoting factor (MPF), which is essential for G1/S and G2/M phase transitions of eukaryotic cell cycle. Mitotic cyclins stably associate with this protein and function as regulatory subunits. The kinase activity of this protein is controlled by cyclin accumulation and destruction through the cell cycle. The phosphorylation and dephosphorylation of this protein also play important regulatory roles in cell cycle control. Alternatively spliced transcript variants encoding different isoforms have been found for this gene.

Molecular Weight: Observed_MW: 34 kDa
Calculated_MW: 27 kDa/34 kDa

Gene ID: 983

UniProt: [P06493](#)

Pathways: [Cell Division Cycle](#), [Fc-epsilon Receptor Signaling Pathway](#), [Neurotrophin Signaling Pathway](#), [Activation of Innate immune Response](#), [Mitotic G1-G1/S Phases](#), [DNA Replication](#), [M Phase](#), [Toll-Like Receptors Cascades](#), [Synthesis of DNA](#)

Application Details

Application Notes: WB 1:500-1:1000 IHC 1:50-1:200 IF 1:50-1:100

Restrictions: For Research Use only

Handling

Format: Liquid

Concentration: 1 mg/mL

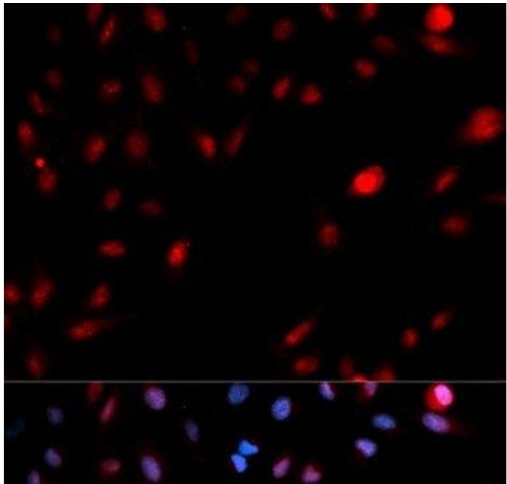
Buffer: PBS with 0.02 % sodium azide, 50 % glycerol, pH 7.3

Preservative: Sodium azide

Precaution of Use: This product contains Sodium azide: a POISONOUS AND HAZARDOUS SUBSTANCE which should be handled by trained staff only.

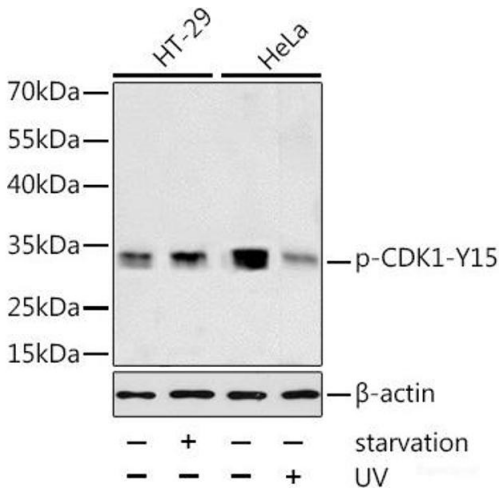
Storage: -20 °C

Storage Comment: Store at -20°C. Avoid freeze / thaw cycles.



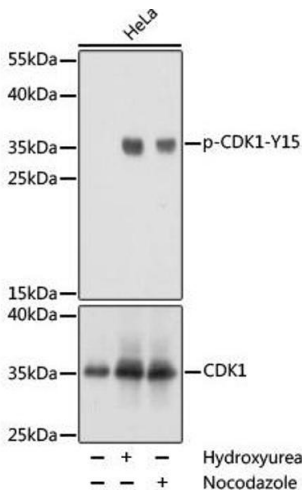
Immunofluorescence

Image 1. Immunofluorescence analysis of MCF-7 cells using Phospho-CDK1(Y15) Polyclonal Antibody



Western Blotting

Image 2. Western blot analysis of extracts of HT-29 and HeLa cells using Phospho-CDK1(Y15) Polyclonal Antibody at dilution of 1:1000. HT-29 cells were treated by serum-starvation overnight. HeLa cells were treated by UV for 15-30 minutes.



Western Blotting

Image 3. Western blot analysis of extracts of NIH/3T3 cells using Phospho-CDK1(Y15) Polyclonal Antibody at dilution of 1:1000.

Please check the [product details page](#) for more images. Overall 6 images are available for ABIN7265020.