

Datasheet for ABIN7265024
anti-CHEK1 antibody (pSer317)



[Go to Product page](#)

3 Images

Overview

Quantity:	200 µL
Target:	CHEK1
Binding Specificity:	pSer317
Reactivity:	Human
Host:	Rabbit
Clonality:	Polyclonal
Conjugate:	This CHEK1 antibody is un-conjugated
Application:	Western Blotting (WB), Immunofluorescence (IF)

Product Details

Immunogen:	A synthetic phosphorylated peptide around S317 of human CHEK1 (NP_001265.2).
Isotype:	IgG
Characteristics:	Phosphorylated antibody
Purification:	Affinity purification

Target Details

Target:	CHEK1
Alternative Name:	CHEK1 (CHEK1 Products)
Background:	The protein encoded by this gene belongs to the Ser/Thr protein kinase family. It is required for checkpoint mediated cell cycle arrest in response to DNA damage or the presence of

Target Details

unreplicated DNA. This protein acts to integrate signals from ATM and ATR, two cell cycle proteins involved in DNA damage responses, that also associate with chromatin in meiotic prophase I. Phosphorylation of CDC25A protein phosphatase by this protein is required for cells to delay cell cycle progression in response to double-strand DNA breaks. Several alternatively spliced transcript variants have been found for this gene.

Molecular Weight: Observed_MW: 60 kDa
Calculated_MW: 43 kDa/50 kDa/54 kDa

Gene ID: 1111

UniProt: [O14757](#)

Pathways: [p53 Signaling](#), [Apoptosis](#), [Cell Division Cycle](#), [DNA Damage Repair](#)

Application Details

Application Notes: WB 1:500-1:2000 IF 1:50-1:200

Restrictions: For Research Use only

Handling

Format: Liquid

Concentration: 1 mg/mL

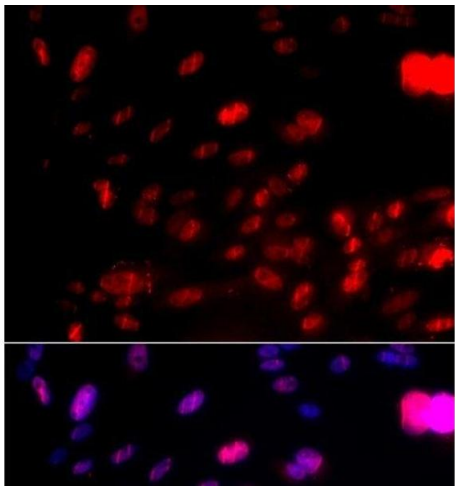
Buffer: PBS with 0.02 % sodium azide, 50 % glycerol, pH 7.3

Preservative: Sodium azide

Precaution of Use: This product contains Sodium azide: a POISONOUS AND HAZARDOUS SUBSTANCE which should be handled by trained staff only.

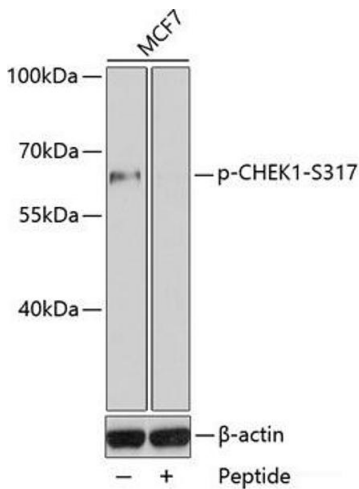
Storage: -20 °C

Storage Comment: Store at -20°C. Avoid freeze / thaw cycles.



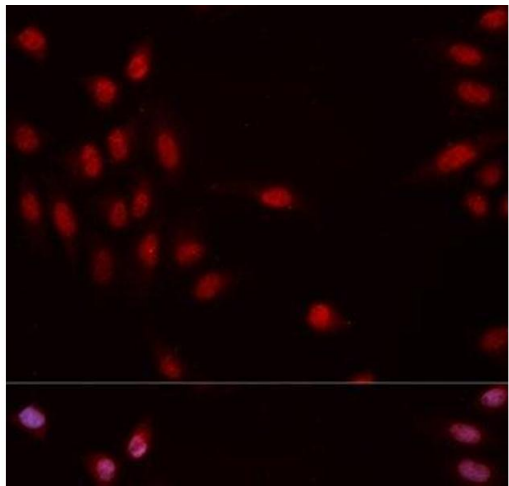
Immunofluorescence

Image 1. Immunofluorescence analysis of U2OS cells using Phospho-CHEK1(S317) Polyclonal Antibody



Western Blotting

Image 2. Western blot analysis of extracts of MCF7 cell line using Phospho-CHEK1(S317) Polyclonal Antibody.



Immunofluorescence

Image 3. Immunofluorescence analysis of MCF-7 cells using Phospho-CHEK1(S317) Polyclonal Antibody