



[Go to Product page](#)

Datasheet for ABIN7265064
anti-MEF2C antibody (pSer396)

2 Images

Overview

Quantity:	200 µL
Target:	MEF2C
Binding Specificity:	pSer396
Reactivity:	Human
Host:	Rabbit
Clonality:	Polyclonal
Conjugate:	This MEF2C antibody is un-conjugated
Application:	Western Blotting (WB), Immunofluorescence (IF)

Product Details

Immunogen:	A synthetic phosphorylated peptide around S396 of human MEF2C (NP_002388.2).
Isotype:	IgG
Characteristics:	Phosphorylated antibody
Purification:	Affinity purification

Target Details

Target:	MEF2C
Alternative Name:	MEF2C (MEF2C Products)
Background:	This locus encodes a member of the MADS box transcription enhancer factor 2 (MEF2) family of proteins, which play a role in myogenesis. The encoded protein, MEF2 polypeptide C, has

Target Details

both trans-activating and DNA binding activities. This protein may play a role in maintaining the differentiated state of muscle cells. Mutations and deletions at this locus have been associated with severe mental retardation, stereotypic movements, epilepsy, and cerebral malformation. Alternatively spliced transcript variants have been described.

Molecular Weight: Observed_MW: 60 kDa
Calculated_MW: 44 kDa/47 kDa/50 kDa/51 kDa/52 kDa

Gene ID: 4208

UniProt: [Q06413](#)

Pathways: [Neurotrophin Signaling Pathway](#), [Activation of Innate immune Response](#), [Cellular Response to Molecule of Bacterial Origin](#), [Carbohydrate Homeostasis](#), [Chromatin Binding](#), [Regulation of Muscle Cell Differentiation](#), [Skeletal Muscle Fiber Development](#), [Toll-Like Receptors Cascades](#), [BCR Signaling](#)

Application Details

Application Notes: WB 1:500-1:2000 IF 1:50-1:200

Restrictions: For Research Use only

Handling

Format: Liquid

Concentration: 1 mg/mL

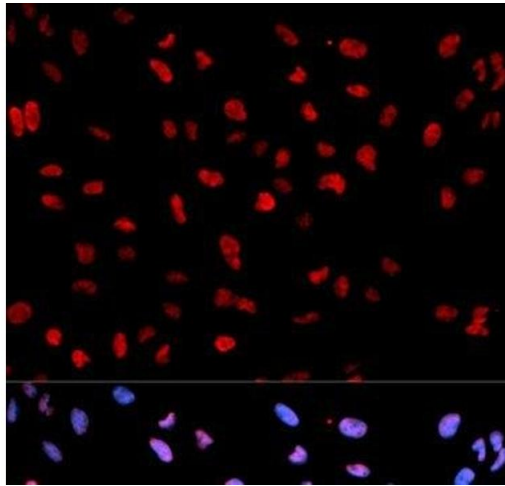
Buffer: PBS with 0.02 % sodium azide, 50 % glycerol, pH 7.3

Preservative: Sodium azide

Precaution of Use: This product contains Sodium azide: a POISONOUS AND HAZARDOUS SUBSTANCE which should be handled by trained staff only.

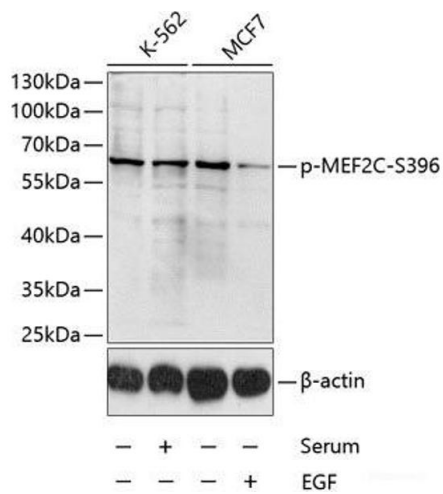
Storage: -20 °C

Storage Comment: Store at -20°C. Avoid freeze / thaw cycles.



Immunofluorescence

Image 1. Immunofluorescence analysis of U2OS cells using Phospho-MEF2C(S396) Polyclonal Antibody



Western Blotting

Image 2. Western blot analysis of extracts of K-562 and MCF-7 cells using Phospho-MEF2C(S396) Polyclonal Antibody at dilution of 1:1000. K562 cells were treated by 10 % FBS for 30 minutes after serum-starvation overnight. MCF7 cells were treated by EGF (100 ng/mL) for 30 minutes after serum-starvation overnight.