

Datasheet for ABIN7265084  
**anti-SMC1A antibody (pSer957)**[Go to Product page](#)

## 4 Images

## Overview

Quantity:	200 µL
Target:	SMC1A
Binding Specificity:	pSer957
Reactivity:	Human, Mouse, Rat
Host:	Rabbit
Clonality:	Polyclonal
Conjugate:	This SMC1A antibody is un-conjugated
Application:	Western Blotting (WB), Immunofluorescence (IF)

## Product Details

Immunogen:	A synthetic phosphorylated peptide around S957 of human SMC1A (NP_006297.2).
Isotype:	IgG
Characteristics:	Phosphorylated antibody
Purification:	Affinity purification

## Target Details

Target:	SMC1A
Alternative Name:	SMC1A ( <a href="#">SMC1A Products</a> )
Background:	Proper cohesion of sister chromatids is a prerequisite for the correct segregation of chromosomes during cell division. The cohesin multiprotein complex is required for sister

## Target Details

chromatid cohesion. This complex is composed partly of two structural maintenance of chromosomes (SMC) proteins, SMC3 and either SMC1B or the protein encoded by this gene. Most of the cohesin complexes dissociate from the chromosomes before mitosis, although those complexes at the kinetochore remain. Therefore, the encoded protein is thought to be an important part of functional kinetochores. In addition, this protein interacts with BRCA1 and is phosphorylated by ATM, indicating a potential role for this protein in DNA repair. This gene, which belongs to the SMC gene family, is located in an area of the X-chromosome that escapes X inactivation. Mutations in this gene result in Cornelia de Lange syndrome. Alternative splicing results in multiple transcript variants encoding different isoforms.

Molecular Weight:	Observed_MW: 160 kDa Calculated_MW: 143 kDa
-------------------	--

Gene ID:	8243
----------	------

UniProt:	<a href="#">Q14683</a>
----------	------------------------

Pathways:	<a href="#">Stem Cell Maintenance</a>
-----------	---------------------------------------

## Application Details

Application Notes:	WB 1:500-1:2000 IF 1:20-1:100
--------------------	-------------------------------

Restrictions:	For Research Use only
---------------	-----------------------

## Handling

Format:	Liquid
---------	--------

Concentration:	1 mg/mL
----------------	---------

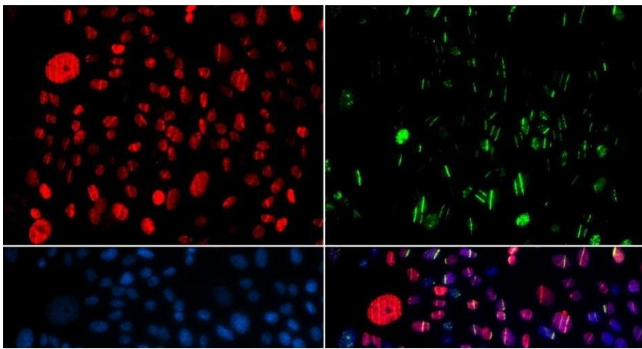
Buffer:	PBS with 0.02 % sodium azide, 50 % glycerol, pH 7.3
---------	---

Preservative:	Sodium azide
---------------	--------------

Precaution of Use:	This product contains Sodium azide: a POISONOUS AND HAZARDOUS SUBSTANCE which should be handled by trained staff only.
--------------------	--

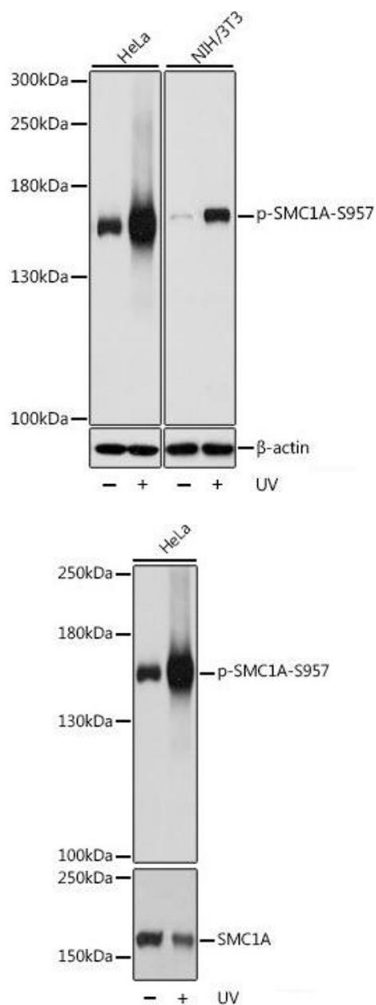
Storage:	-20 °C
----------	--------

Storage Comment:	Store at -20°C. Avoid freeze / thaw cycles.
------------------	---



Immunofluorescence

**Image 1.** Immunofluorescence analysis of GFP-RNF168 transgenic U2OS cells using Phospho-SMC1A(S957) Polyclonal Antibody



Western Blotting

**Image 2.** Western blot analysis of extracts of various cell lines using Phospho-SMC1A(S957) Polyclonal Antibody at dilution of 1:1000. HeLa and NIH/3T3 cells were treated by UV for 15-30 minutes.

Western Blotting

**Image 3.** Western blot analysis of extracts of HeLa cells using Phospho-SMC1A(S957) Polyclonal Antibody at dilution of 1:1000.

Please check the [product details page](#) for more images. Overall 4 images are available for ABIN7265084.