

Datasheet for ABIN7265088  
**anti-gamma H2AX antibody (pSer139)**



[Go to Product page](#)

8 Images

### Overview

Quantity:	200 µL
Target:	gamma H2AX (GAMMA-H2AX)
Binding Specificity:	pSer139
Reactivity:	Human, Mouse, Rat
Host:	Rabbit
Clonality:	Polyclonal
Conjugate:	This gamma H2AX antibody is un-conjugated
Application:	Immunohistochemistry (IHC), Immunofluorescence (IF)

### Product Details

Immunogen:	A synthetic phosphorylated peptide around S139 of human gammaH2A.X (NP_002096.1).
Isotype:	IgG
Characteristics:	Phosphorylated antibody
Purification:	Affinity purification

### Target Details

Target:	gamma H2AX (GAMMA-H2AX)
Alternative Name:	gammaH2A.X ( <a href="#">GAMMA-H2AX Products</a> )
Background:	Histones are basic nuclear proteins that are responsible for the nucleosome structure of the chromosomal fiber in eukaryotes. Two molecules of each of the four core histones (H2A, H2B,

## Target Details

---

H3, and H4) form an octamer, around which approximately 146 bp of DNA is wrapped in repeating units, called nucleosomes. The linker histone, H1, interacts with linker DNA between nucleosomes and functions in the compaction of chromatin into higher order structures. This gene encodes a replication-independent histone that is a member of the histone H2A family, and generates two transcripts through the use of the conserved stem-loop termination motif, and the polyA addition motif.

---

Gene ID: 3014

---

UniProt: [P16104](#)

## Application Details

---

---

Application Notes: IHC 1:50-1:100 IF 1:50-1:100

---

Restrictions: For Research Use only

## Handling

---

---

Format: Liquid

---

Concentration: 1 mg/mL

---

Buffer: PBS with 0.02 % sodium azide, 50 % glycerol, pH 7.3

---

Preservative: Sodium azide

---

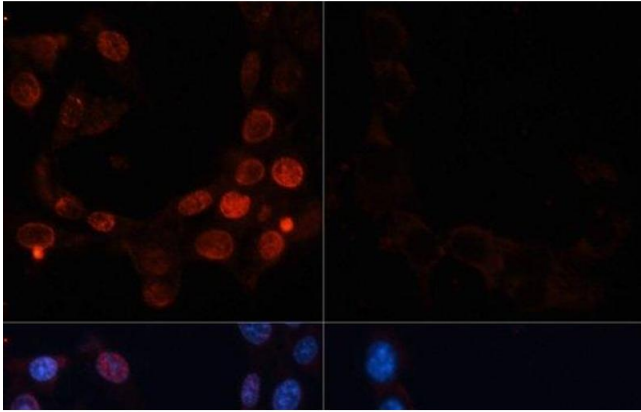
Precaution of Use: This product contains Sodium azide: a POISONOUS AND HAZARDOUS SUBSTANCE which should be handled by trained staff only.

---

Storage: -20 °C

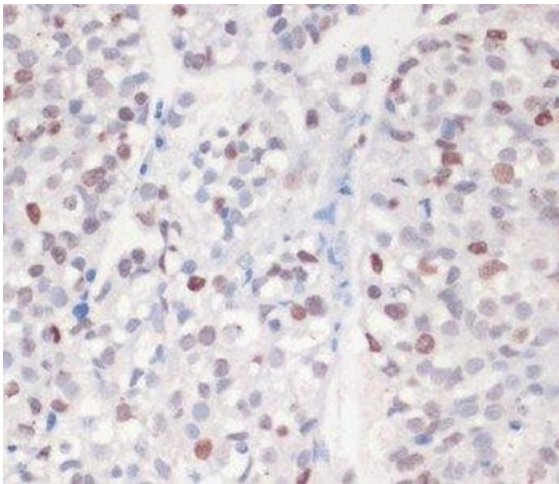
---

Storage Comment: Store at -20°C. Avoid freeze / thaw cycles.



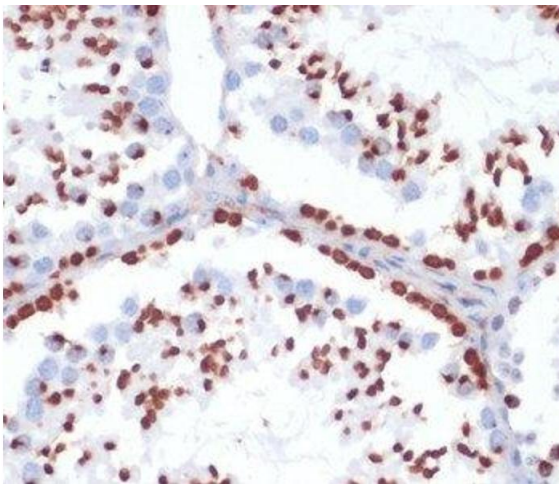
### Immunofluorescence

**Image 1.** Immunofluorescence analysis of NIH/3T3 cells using Phospho-γH2A.X(S139) Polyclonal Antibody at dilution of 1:100. Blue: DAPI for nuclear staining. NIH/3T3 cells were treated by UV for 15-30 minutes at RT (left). Blue: DAPI for nuclear staining.



### Immunohistochemistry (Paraffin-embedded Sections)

**Image 2.** Immunohistochemistry of paraffin-embedded Human gastric cancer using Phospho-γH2A.X(S139) Polyclonal Antibody at dilution of 1:200 (40x lens).



### Immunohistochemistry (Paraffin-embedded Sections)

**Image 3.** Immunohistochemistry of paraffin-embedded Mouse testis using Phospho-γH2A.X(S139) Polyclonal Antibody at dilution of 1:200 (40x lens).

Please check the [product details page](#) for more images. Overall 8 images are available for ABIN7265088.