

Datasheet for ABIN7265092  
**anti-STAT1 antibody (pSer727)**

## 6 Images

[Go to Product page](#)

## Overview

Quantity:	200 µL
Target:	STAT1
Binding Specificity:	pSer727
Reactivity:	Human, Mouse, Rat
Host:	Rabbit
Clonality:	Polyclonal
Conjugate:	This STAT1 antibody is un-conjugated
Application:	Immunohistochemistry (IHC)

## Product Details

Immunogen:	A synthetic phosphorylated peptide around S727 of human STAT1 (NP_009330.1).
Isotype:	IgG
Characteristics:	Phosphorylated antibody
Purification:	Affinity purification

## Target Details

Target:	STAT1
Alternative Name:	STAT1 ( <a href="#">STAT1 Products</a> )
Background:	The protein encoded by this gene is a member of the STAT protein family. In response to cytokines and growth factors, STAT family members are phosphorylated by the receptor

## Target Details

associated kinases, and then form homo- or heterodimers that translocate to the cell nucleus where they act as transcription activators. This protein can be activated by various ligands including interferon-alpha, interferon-gamma, EGF, PDGF and IL6. This protein mediates the expression of a variety of genes, which is thought to be important for cell viability in response to different cell stimuli and pathogens. Two alternatively spliced transcript variants encoding distinct isoforms have been described.

Gene ID: 6772

UniProt: [P42224](#)

Pathways: [JAK-STAT Signaling](#), [RTK Signaling](#), [Interferon-gamma Pathway](#), [Response to Growth Hormone Stimulus](#), [Cellular Response to Molecule of Bacterial Origin](#), [Positive Regulation of Endopeptidase Activity](#), [Hepatitis C](#), [CXCR4-mediated Signaling Events](#)

## Application Details

Application Notes: IHC 1:50-1:100

Restrictions: For Research Use only

## Handling

Format: Liquid

Concentration: 1 mg/mL

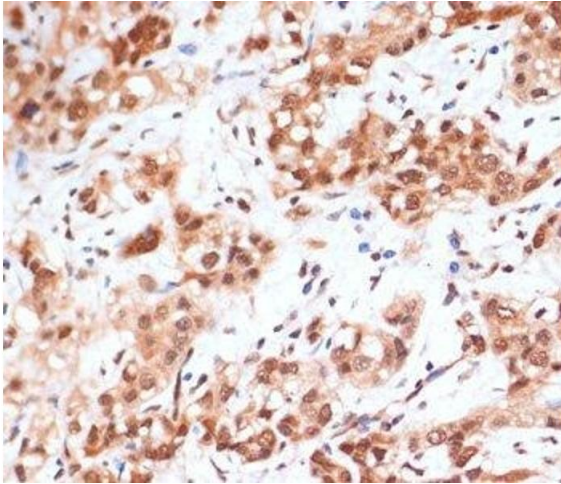
Buffer: PBS with 0.02 % sodium azide, 50 % glycerol, pH 7.3

Preservative: Sodium azide

Precaution of Use: This product contains Sodium azide: a POISONOUS AND HAZARDOUS SUBSTANCE which should be handled by trained staff only.

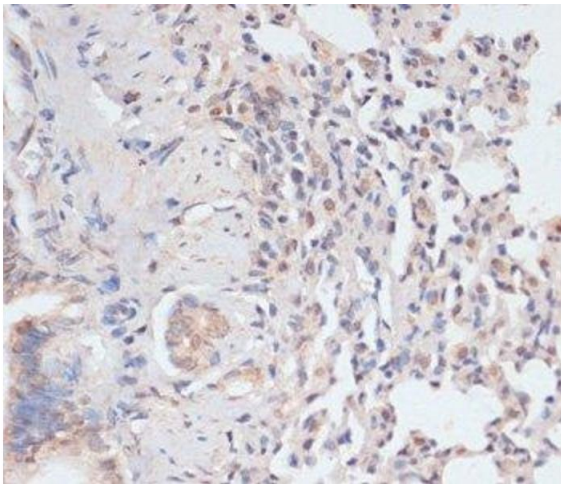
Storage: -20 °C

Storage Comment: Store at -20°C. Avoid freeze / thaw cycles.



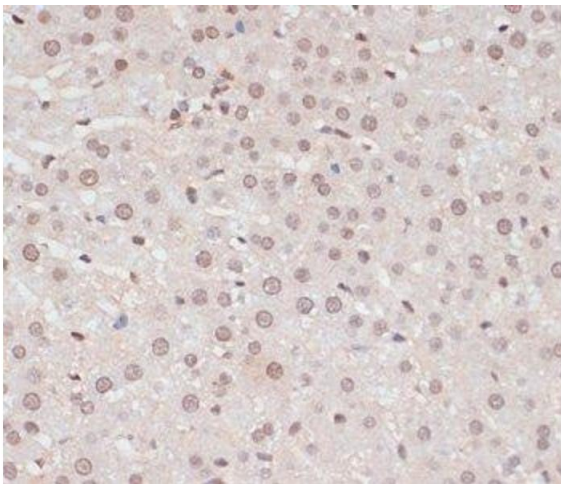
#### Immunohistochemistry (Paraffin-embedded Sections)

**Image 1.** Immunohistochemistry of paraffin-embedded Human liver cancer using Phospho-STAT1(S727) Polyclonal Antibody at dilution of 1:100 (40x lens).



#### Immunohistochemistry (Paraffin-embedded Sections)

**Image 2.** Immunohistochemistry of paraffin-embedded Rat lung using Phospho-STAT1(S727) Polyclonal Antibody at dilution of 1:100 (40x lens).



#### Immunohistochemistry (Paraffin-embedded Sections)

**Image 3.** Immunohistochemistry of paraffin-embedded Rat liver using Phospho-STAT1(S727) Polyclonal Antibody at dilution of 1:100 (40x lens).

Please check the [product details page](#) for more images. Overall 6 images are available for ABIN7265092.