

Datasheet for ABIN7265110
anti-Paxillin antibody (pTyr118)



[Go to Product page](#)

2 Images

Overview

Quantity:	200 µL
Target:	Paxillin (PXN)
Binding Specificity:	pTyr118
Reactivity:	Human, Mouse, Rat
Host:	Rabbit
Clonality:	Polyclonal
Conjugate:	This Paxillin antibody is un-conjugated
Application:	Western Blotting (WB), Immunohistochemistry (IHC)

Product Details

Immunogen:	A phospho specific peptide corresponding to residues surrounding Y118 of human PXN
Isotype:	IgG
Characteristics:	Phosphorylated antibody
Purification:	Affinity purification

Target Details

Target:	Paxillin (PXN)
Alternative Name:	PXN (PXN Products)
Background:	This gene encodes a cytoskeletal protein involved in actin-membrane attachment at sites of cell adhesion to the extracellular matrix (focal adhesion). Alternatively spliced transcript variants

Target Details

encoding different isoforms have been described for this gene. These isoforms exhibit different expression pattern, and have different biochemical, as well as physiological properties (PMID:9054445).

Molecular Weight: Observed_MW: 70 kDa
Calculated_MW: 46 kDa/60 kDa/64 kDa/66 kDa

Gene ID: 5829

UniProt: [P49023](#)

Pathways: [MAPK Signaling](#), [EGFR Signaling Pathway](#), [Response to Growth Hormone Stimulus](#), [Cell-Cell Junction Organization](#), [Maintenance of Protein Location](#), [CXCR4-mediated Signaling Events](#), [Signaling Events mediated by VEGFR1 and VEGFR2](#), [Signaling of Hepatocyte Growth Factor Receptor](#), [VEGF Signaling](#)

Application Details

Application Notes: WB 1:500-1:2000 IHC 1:50-1:100

Restrictions: For Research Use only

Handling

Format: Liquid

Concentration: 1 mg/mL

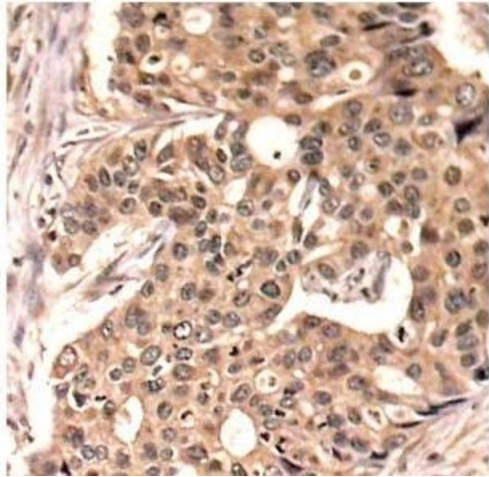
Buffer: PBS with 0.02 % sodium azide, 50 % glycerol, pH 7.3

Preservative: Sodium azide

Precaution of Use: This product contains Sodium azide: a POISONOUS AND HAZARDOUS SUBSTANCE which should be handled by trained staff only.

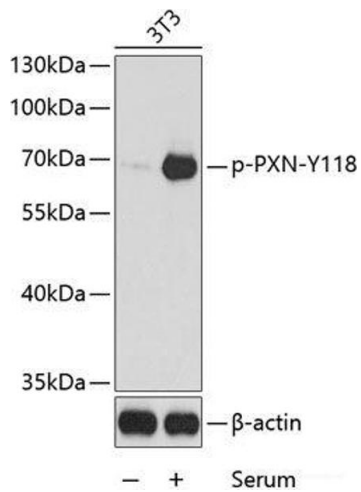
Storage: -20 °C

Storage Comment: Store at -20°C. Avoid freeze / thaw cycles.



Immunohistochemistry (Paraffin-embedded Sections)

Image 1. Immunohistochemistry of paraffin-embedded Human breast carcinoma tissue, using Phospho-PXN(Y118) Polyclonal Antibody



Western Blotting

Image 2. Western blot analysis of extracts from 3T3 cells using Phospho-PXN(Y118) Polyclonal Antibody.