

Datasheet for ABIN7265122  
**anti-FOXO4 antibody (pSer197)**

## 3 Images

[Go to Product page](#)

## Overview

Quantity:	200 µL
Target:	FOXO4
Binding Specificity:	pSer197
Reactivity:	Human, Mouse, Rat
Host:	Rabbit
Clonality:	Polyclonal
Conjugate:	This FOXO4 antibody is un-conjugated
Application:	Western Blotting (WB), Immunohistochemistry (IHC), Immunofluorescence (IF)

## Product Details

Immunogen:	A phospho specific peptide corresponding to residues surrounding S197 of human FOXO4
Isotype:	IgG
Characteristics:	Phosphorylated antibody
Purification:	Affinity purification

## Target Details

Target:	FOXO4
Alternative Name:	FOXO4 ( <a href="#">FOXO4 Products</a> )
Background:	This gene encodes a member of the O class of winged helix/forkhead transcription factor family. Proteins encoded by this class are regulated by factors involved in growth and

## Target Details

differentiation indicating they play a role in these processes. A translocation involving this gene on chromosome X and the homolog of the Drosophila trithorax gene, encoding a DNA binding protein, located on chromosome 11 is associated with leukemia. Multiple transcript variants encoding different isoforms have been found for this gene.

Molecular Weight: Observed\_MW: 60 kDa  
Calculated\_MW: 47 kDa/53 kDa

Gene ID: 4303

UniProt: [P98177](#)

Pathways: [Cell Division Cycle](#), [Fc-epsilon Receptor Signaling Pathway](#), [EGFR Signaling Pathway](#), [Neurotrophin Signaling Pathway](#), [Regulation of Muscle Cell Differentiation](#)

## Application Details

Application Notes: WB 1:500-1:2000 IHC 1:50-1:100 IF 1:100-1:200

Restrictions: For Research Use only

## Handling

Format: Liquid

Concentration: 1 mg/mL

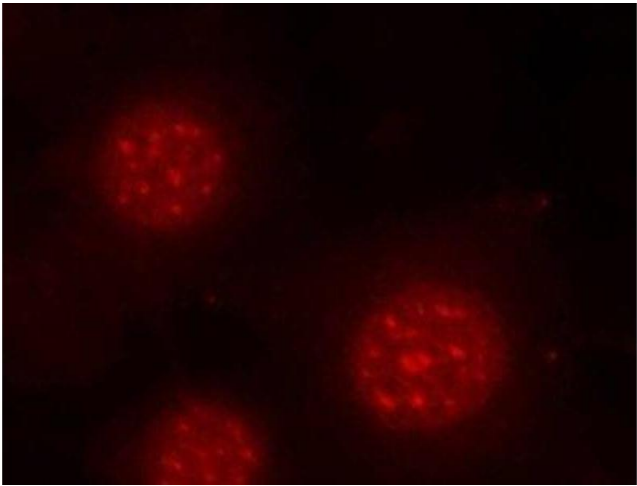
Buffer: PBS with 0.02 % sodium azide, 50 % glycerol, pH 7.3

Preservative: Sodium azide

Precaution of Use: This product contains Sodium azide: a POISONOUS AND HAZARDOUS SUBSTANCE which should be handled by trained staff only.

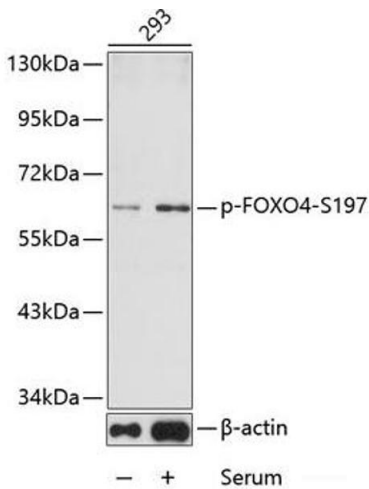
Storage: -20 °C

Storage Comment: Store at -20°C. Avoid freeze / thaw cycles.



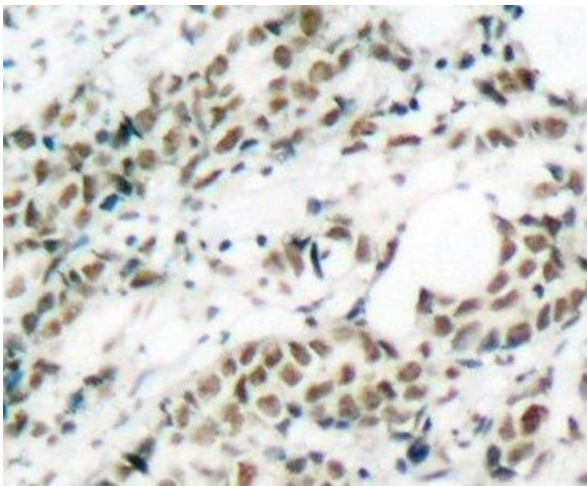
### Immunofluorescence

**Image 1.** Immunofluorescence analysis of methanol-fixed MCF-7 cells using Phospho-FOXO4(S197) Polyclonal Antibody



### Western Blotting

**Image 2.** Western blot analysis of extracts from 293 cells using Phospho-FOXO4(S197) Polyclonal Antibody.



### Immunohistochemistry (Paraffin-embedded Sections)

**Image 3.** Immunohistochemistry of paraffin-embedded Human breast carcinoma tissue, using Phospho-FOXO4(S197) Polyclonal Antibody