

Datasheet for ABIN7265124
anti-Cofilin antibody (pSer3)

3 Images

[Go to Product page](#)

Overview

Quantity:	200 µL
Target:	Cofilin (CFL1)
Binding Specificity:	pSer3
Reactivity:	Human, Mouse, Rat
Host:	Rabbit
Clonality:	Polyclonal
Conjugate:	This Cofilin antibody is un-conjugated
Application:	Western Blotting (WB), Immunohistochemistry (IHC), Immunofluorescence (IF)

Product Details

Immunogen:	A phospho specific peptide corresponding to residues surrounding S3 of human CFL1
Isotype:	IgG
Characteristics:	Phosphorylated antibody
Purification:	Affinity purification

Target Details

Target:	Cofilin (CFL1)
Alternative Name:	CFL1 (CFL1 Products)
Background:	The protein encoded by this gene can polymerize and depolymerize F-actin and G-actin in a pH - dependent manner. Increased phosphorylation of this protein by LIM kinase aids in Rho-

Target Details

induced reorganization of the actin cytoskeleton. Cofilin is a widely distributed intracellular actin-modulating protein that binds and depolymerizes filamentous F-actin and inhibits the polymerization of monomeric G-actin in a pH -dependent manner. It is involved in the translocation of actin-cofilin complex from cytoplasm to nucleus.

Molecular Weight: Observed_MW: 18 kDa
Calculated_MW: 18 kDa

Gene ID: 1072

UniProt: [P23528](#)

Pathways: [Regulation of Cell Size](#), [Tube Formation](#), [Protein targeting to Nucleus](#), [CXCR4-mediated Signaling Events](#)

Application Details

Application Notes: WB 1:500-1:2000 IHC 1:50-1:100 IF 1:100-1:200

Restrictions: For Research Use only

Handling

Format: Liquid

Concentration: 1 mg/mL

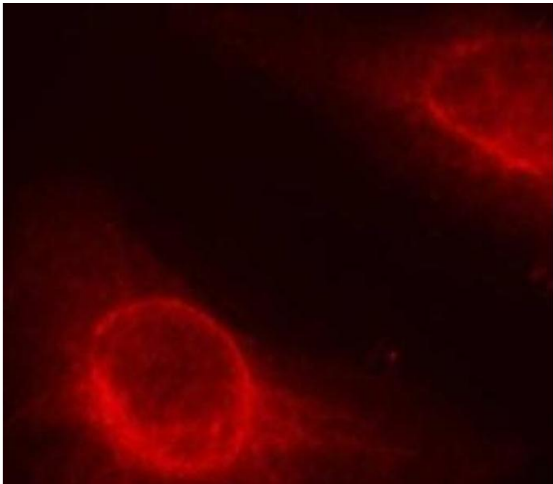
Buffer: PBS with 0.02 % sodium azide, 50 % glycerol, pH 7.3

Preservative: Sodium azide

Precaution of Use: This product contains Sodium azide: a POISONOUS AND HAZARDOUS SUBSTANCE which should be handled by trained staff only.

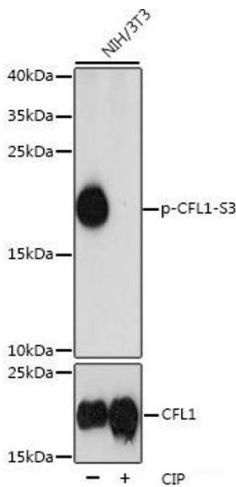
Storage: -20 °C

Storage Comment: Store at -20°C. Avoid freeze / thaw cycles.



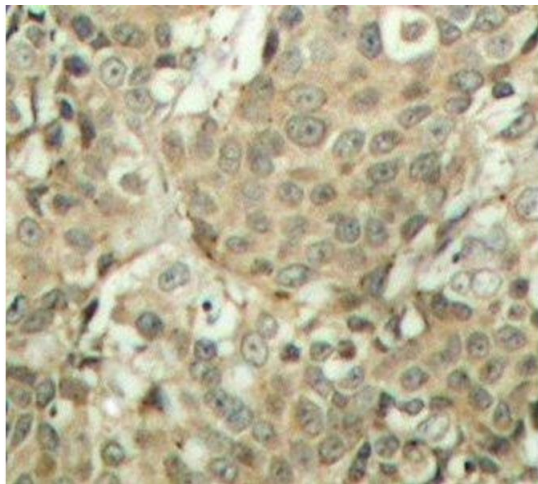
Immunofluorescence

Image 1. Immunofluorescence analysis of methanol-fixed HeLa cells using Phospho-CFL1(S3) Polyclonal Antibody



Western Blotting

Image 2. Western blot analysis of extracts of NIH/3T3 cells using Phospho-CFL1(S3) Polyclonal Antibody at dilution of 1:1000.



Immunohistochemistry (Paraffin-embedded Sections)

Image 3. Immunohistochemistry of paraffin-embedded Human breast carcinoma tissue, using Phospho-CFL1(S3) Polyclonal Antibody