

Datasheet for ABIN7265136
anti-Stathmin 1 antibody (pSer25)



[Go to Product page](#)

2 Images

Overview

Quantity:	200 µL
Target:	Stathmin 1 (STMN1)
Binding Specificity:	pSer25
Reactivity:	Human, Mouse, Rat
Host:	Rabbit
Clonality:	Polyclonal
Conjugate:	This Stathmin 1 antibody is un-conjugated
Application:	Western Blotting (WB), Immunohistochemistry (IHC)

Product Details

Immunogen:	A phospho specific peptide corresponding to residues surrounding S25 of human STMN1
Isotype:	IgG
Characteristics:	Phosphorylated antibody
Purification:	Affinity purification

Target Details

Target:	Stathmin 1 (STMN1)
Alternative Name:	STMN1 (STMN1 Products)
Background:	This gene belongs to the stathmin family of genes. It encodes a ubiquitous cytosolic phosphoprotein proposed to function as an intracellular relay integrating regulatory signals of

Target Details

the cellular environment. The encoded protein is involved in the regulation of the microtubule filament system by destabilizing microtubules. It prevents assembly and promotes disassembly of microtubules. Multiple transcript variants encoding different isoforms have been found for this gene.

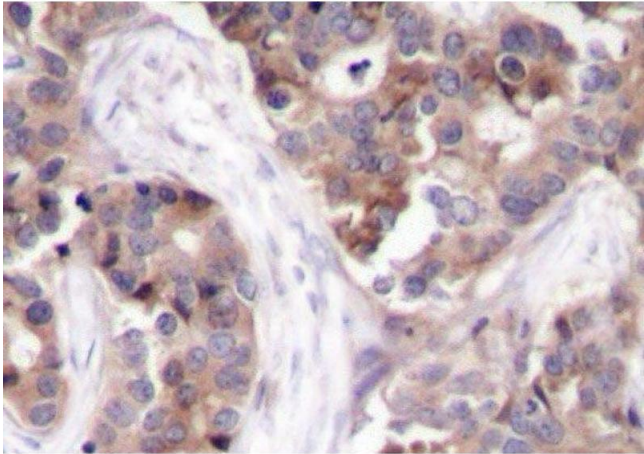
Molecular Weight:	Observed_MW: 17 kDa Calculated_MW: 17 kDa/19 kDa
Gene ID:	3925
UniProt:	P16949
Pathways:	MAPK Signaling , Microtubule Dynamics

Application Details

Application Notes:	WB 1:500-1:2000 IHC 1:50-1:100
Restrictions:	For Research Use only

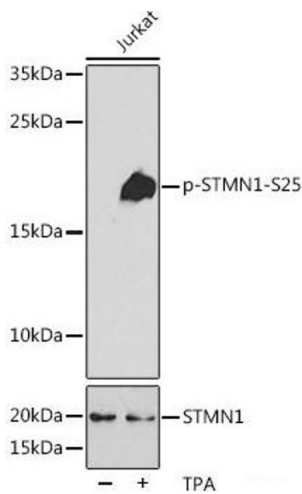
Handling

Format:	Liquid
Concentration:	1 mg/mL
Buffer:	PBS with 0.02 % sodium azide, 50 % glycerol, pH 7.3
Preservative:	Sodium azide
Precaution of Use:	This product contains Sodium azide: a POISONOUS AND HAZARDOUS SUBSTANCE which should be handled by trained staff only.
Storage:	-20 °C
Storage Comment:	Store at -20°C. Avoid freeze / thaw cycles.



Immunohistochemistry (Paraffin-embedded Sections)

Image 1. Immunohistochemistry of paraffin-embedded Human breast carcinoma using Phospho-STMN1(S25) Polyclonal Antibody



Western Blotting

Image 2. Western blot analysis of extracts of Jurkat cells using Phospho-STMN1(S25) Polyclonal Antibody at dilution of 1:2000.