

Datasheet for ABIN7265138  
**anti-BRCA1 antibody (pSer1423)**



[Go to Product page](#)

7 Images

## Overview

Quantity:	200 µL
Target:	BRCA1
Binding Specificity:	pSer1423
Reactivity:	Human, Rat, Mouse
Host:	Rabbit
Clonality:	Polyclonal
Conjugate:	This BRCA1 antibody is un-conjugated
Application:	Western Blotting (WB), Immunohistochemistry (IHC), Immunofluorescence (IF)

## Product Details

Immunogen:	A synthetic phosphorylated peptide around S1423 of human BRCA1 (NP_009225.1).
Isotype:	IgG
Characteristics:	Phosphorylated antibody
Purification:	Affinity purification

## Target Details

Target:	BRCA1
Alternative Name:	BRCA1 ( <a href="#">BRCA1 Products</a> )
Background:	This gene encodes a nuclear phosphoprotein that plays a role in maintaining genomic stability, and it also acts as a tumor suppressor. The encoded protein combines with other tumor

## Target Details

suppressors, DNA damage sensors, and signal transducers to form a large multi-subunit protein complex known as the BRCA1-associated genome surveillance complex (BASC). This gene product associates with RNA polymerase II, and through the C-terminal domain, also interacts with histone deacetylase complexes. This protein thus plays a role in transcription, DNA repair of double-stranded breaks, and recombination. Mutations in this gene are responsible for approximately 40 % of inherited breast cancers and more than 80 % of inherited breast and ovarian cancers. Alternative splicing plays a role in modulating the subcellular localization and physiological function of this gene. Many alternatively spliced transcript variants, some of which are disease-associated mutations, have been described for this gene, but the full-length natures of only some of these variants has been described. A related pseudogene, which is also located on chromosome 17, has been identified.

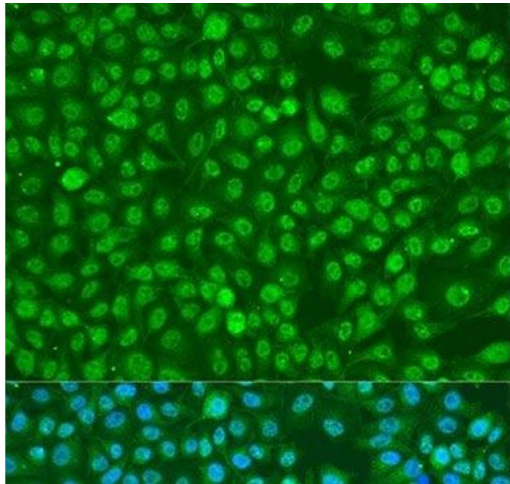
Molecular Weight:	Observed_MW: 270 kDa Calculated_MW: 7 kDa/78-85 kDa/202-210 kDa
Gene ID:	672
UniProt:	<a href="#">P38398</a>
Pathways:	<a href="#">Cell Division Cycle</a> , <a href="#">DNA Damage Repair</a> , <a href="#">Intracellular Steroid Hormone Receptor Signaling Pathway</a> , <a href="#">Positive Regulation of Response to DNA Damage Stimulus</a>

## Application Details

Application Notes:	WB 1:500-1:2000 IHC 1:50-1:200 IF 1:50-1:200
Restrictions:	For Research Use only

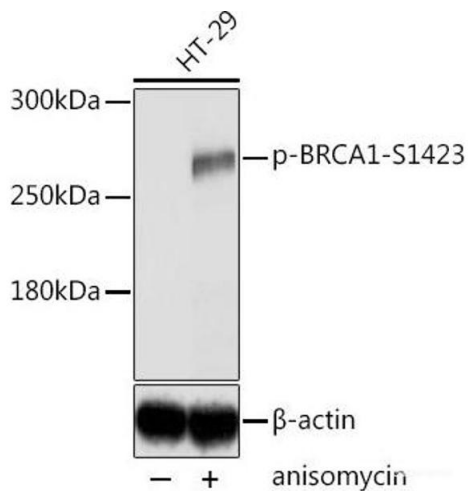
## Handling

Format:	Liquid
Concentration:	1 mg/mL
Buffer:	PBS with 0.02 % sodium azide, 50 % glycerol, pH 7.3
Preservative:	Sodium azide
Precaution of Use:	This product contains Sodium azide: a POISONOUS AND HAZARDOUS SUBSTANCE which should be handled by trained staff only.
Storage:	-20 °C
Storage Comment:	Store at -20°C. Avoid freeze / thaw cycles.



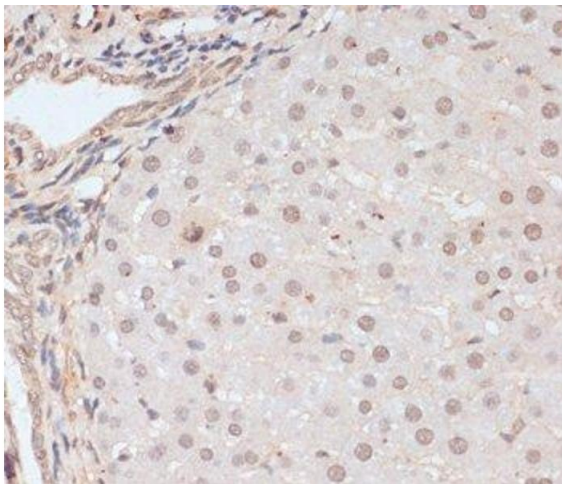
#### Immunofluorescence

**Image 1.** Immunofluorescence analysis of U2OS cells using Phospho-BRCA1(S1423) Polyclonal Antibody at dilution of 1:100. Blue: DAPI for nuclear staining.



#### Western Blotting

**Image 2.** Western blot analysis of extracts of HT-29 cells using Phospho-BRCA1(S1423) Polyclonal Antibody at dilution of 1:2000. HT-29 cells were treated by Anisomycin (5 µg/mL) for 30 minutes after serum-starvation overnight.



#### Immunohistochemistry (Paraffin-embedded Sections)

**Image 3.** Immunohistochemistry of paraffin-embedded Rat liver using Phospho-BRCA1(S1423) Polyclonal Antibody at dilution of 1:100 (40x lens).

Please check the [product details page](#) for more images. Overall 7 images are available for ABIN7265138.