



[Go to Product page](#)

Datasheet for ABIN7265146  
**anti-SYN1 antibody (pSer9)**

2 Images

Overview

|                      |                                                |
|----------------------|------------------------------------------------|
| Quantity:            | 200 µL                                         |
| Target:              | SYN1                                           |
| Binding Specificity: | pSer9                                          |
| Reactivity:          | Human, Mouse, Rat                              |
| Host:                | Rabbit                                         |
| Clonality:           | Polyclonal                                     |
| Conjugate:           | This SYN1 antibody is un-conjugated            |
| Application:         | Western Blotting (WB), Immunofluorescence (IF) |

Product Details

|                  |                                                                                   |
|------------------|-----------------------------------------------------------------------------------|
| Immunogen:       | A phospho specific peptide corresponding to residues surrounding S9 of human SYN1 |
| Isotype:         | IgG                                                                               |
| Characteristics: | Phosphorylated antibody                                                           |
| Purification:    | Affinity purification                                                             |

Target Details

|                   |                                                                                                                                                                        |
|-------------------|------------------------------------------------------------------------------------------------------------------------------------------------------------------------|
| Target:           | SYN1                                                                                                                                                                   |
| Alternative Name: | SYN1 ( <a href="#">SYN1 Products</a> )                                                                                                                                 |
| Background:       | This gene is a member of the synapsin gene family. Synapsins encode neuronal phosphoproteins which associate with the cytoplasmic surface of synaptic vesicles. Family |

## Target Details

---

members are characterized by common protein domains, and they are implicated in synaptogenesis and the modulation of neurotransmitter release, suggesting a potential role in several neuropsychiatric diseases. This member of the synapsin family plays a role in regulation of axonogenesis and synaptogenesis. The protein encoded serves as a substrate for several different protein kinases and phosphorylation may function in the regulation of this protein in the nerve terminal. Mutations in this gene may be associated with X-linked disorders with primary neuronal degeneration such as Rett syndrome. Alternatively spliced transcript variants encoding different isoforms have been identified.

|                   |                                                     |
|-------------------|-----------------------------------------------------|
| Molecular Weight: | Observed_MW: 74 kDa<br>Calculated_MW: 70 kDa/74 kDa |
| Gene ID:          | 6853                                                |
| UniProt:          | <a href="#">P17600</a>                              |

## Application Details

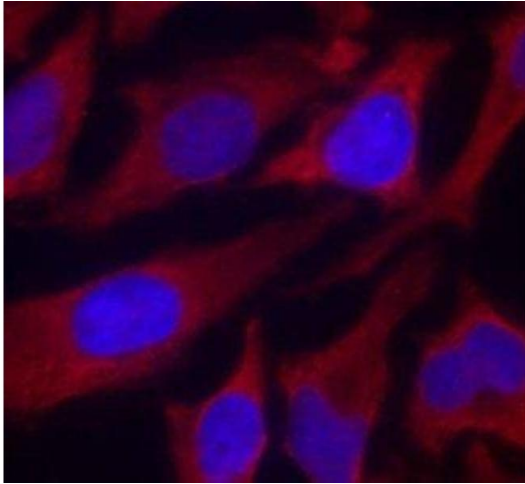
---

|                    |                                |
|--------------------|--------------------------------|
| Application Notes: | WB 1:500-1:2000 IF 1:100-1:200 |
| Restrictions:      | For Research Use only          |

## Handling

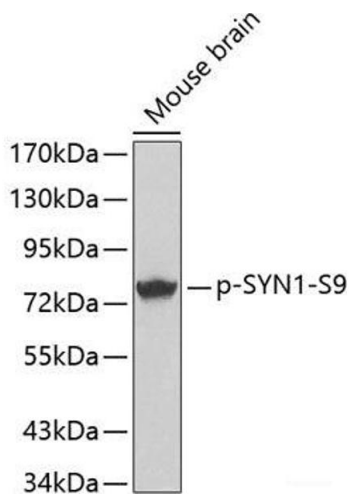
---

|                    |                                                                                                                        |
|--------------------|------------------------------------------------------------------------------------------------------------------------|
| Format:            | Liquid                                                                                                                 |
| Concentration:     | 1 mg/mL                                                                                                                |
| Buffer:            | PBS with 0.02 % sodium azide, 50 % glycerol, pH 7.3                                                                    |
| Preservative:      | Sodium azide                                                                                                           |
| Precaution of Use: | This product contains Sodium azide: a POISONOUS AND HAZARDOUS SUBSTANCE which should be handled by trained staff only. |
| Storage:           | -20 °C                                                                                                                 |
| Storage Comment:   | Store at -20°C. Avoid freeze / thaw cycles.                                                                            |



### Immunofluorescence

**Image 1.** Immunofluorescence analysis of methanol-fixed HeLa cells using Phospho-SYN1(S9) Polyclonal Antibody



### Western Blotting

**Image 2.** Western blot analysis of extracts from Mouse Brain tissue using Phospho-SYN1(S9) Polyclonal Antibody.