

Datasheet for ABIN7265188
anti-MAPKAP Kinase 2 antibody (pThr334)[Go to Product page](#)

3 Images

Overview

Quantity:	200 µL
Target:	MAPKAP Kinase 2 (MAPKAPK2)
Binding Specificity:	pThr334
Reactivity:	Human, Mouse, Rat
Host:	Rabbit
Clonality:	Polyclonal
Conjugate:	This MAPKAP Kinase 2 antibody is un-conjugated
Application:	Western Blotting (WB), Immunohistochemistry (IHC), Immunofluorescence (IF)

Product Details

Immunogen:	A phospho specific peptide corresponding to residues surrounding T334 of human MAPKAPK2
Isotype:	IgG
Characteristics:	Phosphorylated antibody
Purification:	Affinity purification

Target Details

Target:	MAPKAP Kinase 2 (MAPKAPK2)
Alternative Name:	MAPKAPK2 (MAPKAPK2 Products)
Background:	This gene encodes a member of the Ser/Thr protein kinase family. This kinase is regulated through direct phosphorylation by p38 MAP kinase. In conjunction with p38 MAP kinase, this

Target Details

kinase is known to be involved in many cellular processes including stress and inflammatory responses, nuclear export, gene expression regulation and cell proliferation. Heat shock protein HSP27 was shown to be one of the substrates of this kinase in vivo. Two transcript variants encoding two different isoforms have been found for this gene.

Molecular Weight: Observed_MW: 55 kDa

Calculated_MW: 42 kDa/45 kDa

Gene ID: 9261

UniProt: [P49137](#)

Pathways: [MAPK Signaling](#), [Neurotrophin Signaling Pathway](#), [Activation of Innate immune Response](#), [Toll-Like Receptors Cascades](#)

Application Details

Application Notes: WB 1:500-1:2000 IHC 1:50-1:100 IF 1:100-1:200

Restrictions: For Research Use only

Handling

Format: Liquid

Concentration: 1 mg/mL

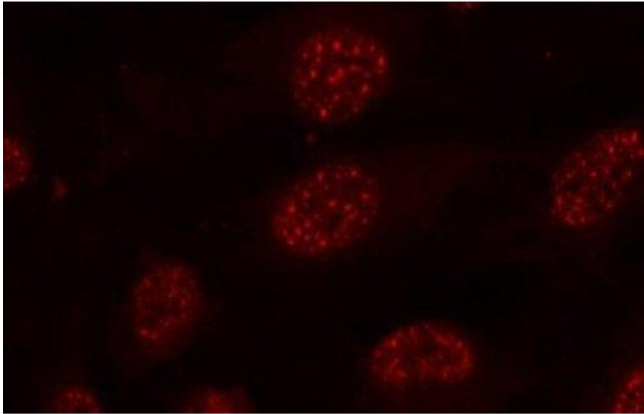
Buffer: PBS with 0.02 % sodium azide, 50 % glycerol, pH 7.3

Preservative: Sodium azide

Precaution of Use: This product contains Sodium azide: a POISONOUS AND HAZARDOUS SUBSTANCE which should be handled by trained staff only.

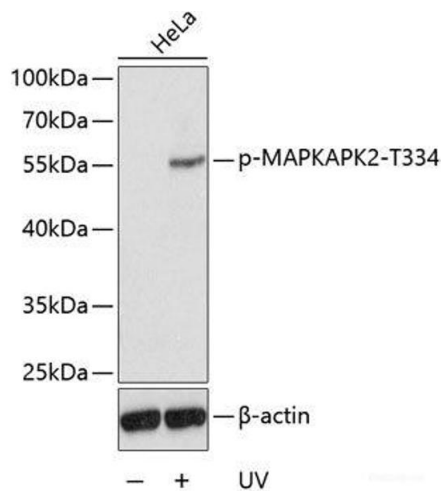
Storage: -20 °C

Storage Comment: Store at -20°C. Avoid freeze / thaw cycles.



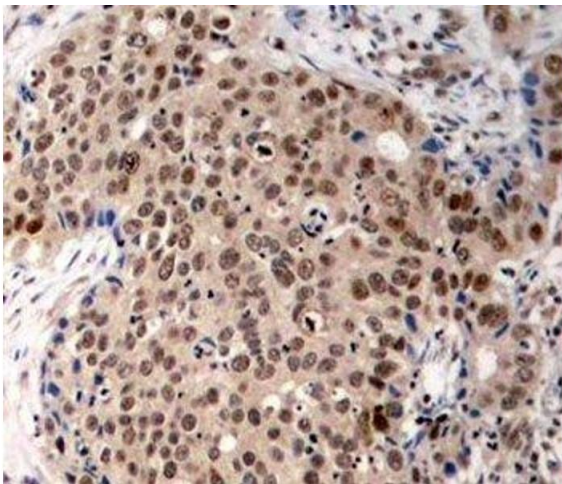
Immunofluorescence

Image 1. Immunofluorescence analysis of methanol-fixed HeLa cells using Phospho-MAPKAPK2(T334) Polyclonal Antibody



Western Blotting

Image 2. Western blot analysis of extracts from HeLa cells using Phospho-MAPKAPK2(T334) Polyclonal Antibody.



Immunohistochemistry (Paraffin-embedded Sections)

Image 3. Immunohistochemistry of paraffin-embedded Human breast carcinoma using Phospho-MAPKAPK2(T334) Polyclonal Antibody