



[Go to Product page](#)

Datasheet for ABIN7265190
anti-NFKB2 antibody (pSer866)

3 Images

Overview

Quantity:	200 µL
Target:	NFKB2
Binding Specificity:	pSer866
Reactivity:	Human, Mouse, Rat
Host:	Rabbit
Clonality:	Polyclonal
Conjugate:	This NFKB2 antibody is un-conjugated
Application:	Western Blotting (WB), Immunohistochemistry (IHC), Immunofluorescence (IF)

Product Details

Immunogen:	A phospho specific peptide corresponding to residues surrounding S866 of human NFkB p100
Isotype:	IgG
Characteristics:	Phosphorylated antibody
Purification:	Affinity purification

Target Details

Target:	NFKB2
Alternative Name:	NFkB p100 (NFkB2 Products)
Background:	This gene encodes a subunit of the transcription factor complex nuclear factor-kappa-B (NFkB). The NFkB complex is expressed in numerous cell types and functions as a central activator of

Target Details

genes involved in inflammation and immune function. The protein encoded by this gene can function as both a transcriptional activator or repressor depending on its dimerization partner. The p100 full-length protein is co-translationally processed into a p52 active form. Chromosomal rearrangements and translocations of this locus have been observed in B cell lymphomas, some of which may result in the formation of fusion proteins. There is a pseudogene for this gene on chromosome 18. Alternative splicing results in multiple transcript variants.

Molecular Weight: Observed_MW: 120 kDa
Calculated_MW: 47 kDa/96 kDa

Gene ID: 4791

UniProt: [Q00653](#)

Pathways: [Toll-Like Receptors Cascades](#)

Application Details

Application Notes: WB 1:500-1:2000 IHC 1:50-1:100 IF 1:50-1:100

Restrictions: For Research Use only

Handling

Format: Liquid

Concentration: 1 mg/mL

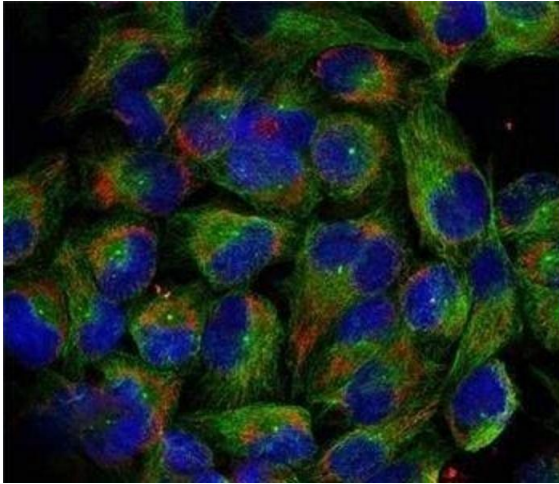
Buffer: PBS with 0.02 % sodium azide, 50 % glycerol, pH 7.3

Preservative: Sodium azide

Precaution of Use: This product contains Sodium azide: a POISONOUS AND HAZARDOUS SUBSTANCE which should be handled by trained staff only.

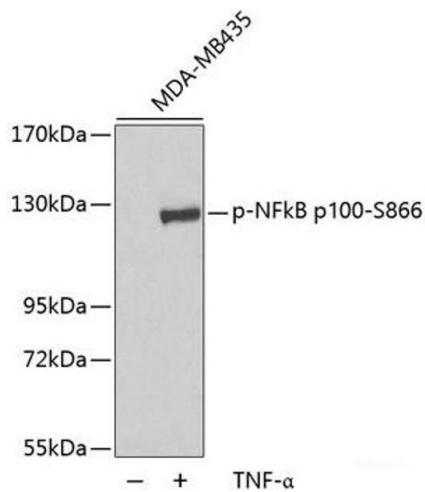
Storage: -20 °C

Storage Comment: Store at -20°C. Avoid freeze / thaw cycles.



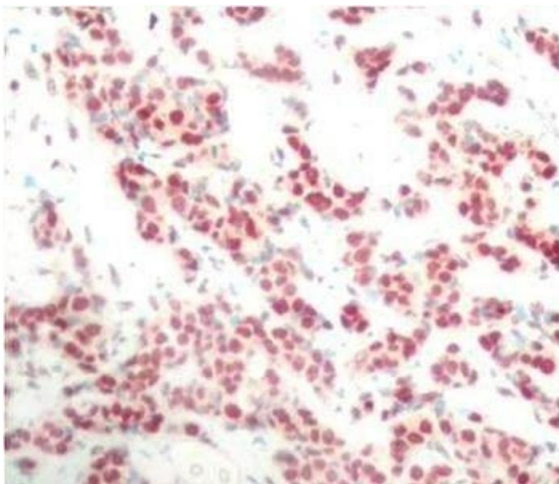
Immunofluorescence

Image 1. Immunofluorescence analysis of methanol-fixed HeLa cells using Phospho-NFkB p100(S866) Polyclonal Antibody



Western Blotting

Image 2. Western blot analysis of extracts of MDA-MB435 cells using Phospho-NFkB p100(S866) Polyclonal Antibody.



Immunohistochemistry (Paraffin-embedded Sections)

Image 3. Immunohistochemistry of paraffin-embedded Human breast carcinoma using Phospho-NFkB p100(S866) Polyclonal Antibody