

Datasheet for ABIN7265202
anti-STAT1 antibody (pSer727)



[Go to Product page](#)

3 Images

Overview

Quantity:	200 µL
Target:	STAT1
Binding Specificity:	pSer727
Reactivity:	Human, Mouse, Rat
Host:	Rabbit
Clonality:	Polyclonal
Conjugate:	This STAT1 antibody is un-conjugated
Application:	Western Blotting (WB), Immunohistochemistry (IHC), Immunofluorescence (IF)

Product Details

Immunogen:	A phospho specific peptide corresponding to residues surrounding S727 of human STAT1
Isotype:	IgG
Characteristics:	Phosphorylated antibody
Purification:	Affinity purification

Target Details

Target:	STAT1
Alternative Name:	STAT1 (STAT1 Products)
Background:	The protein encoded by this gene is a member of the STAT protein family. In response to cytokines and growth factors, STAT family members are phosphorylated by the receptor

Target Details

associated kinases, and then form homo- or heterodimers that translocate to the cell nucleus where they act as transcription activators. This protein can be activated by various ligands including interferon-alpha, interferon-gamma, EGF, PDGF and IL6. This protein mediates the expression of a variety of genes, which is thought to be important for cell viability in response to different cell stimuli and pathogens. Two alternatively spliced transcript variants encoding distinct isoforms have been described.

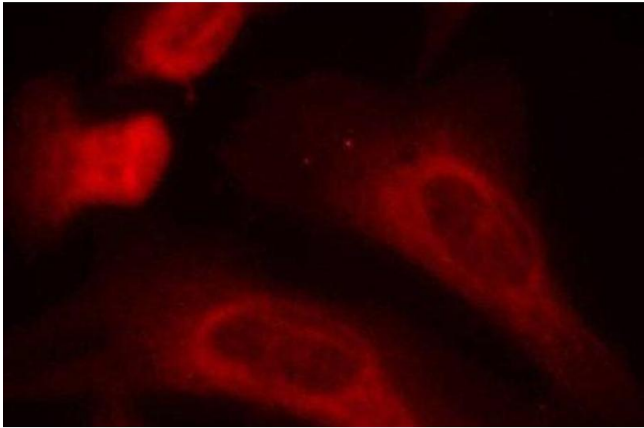
Molecular Weight:	Observed_MW: 87 kDa Calculated_MW: 83 kDa/87 kDa
Gene ID:	6772
UniProt:	P42224
Pathways:	JAK-STAT Signaling , RTK Signaling , Interferon-gamma Pathway , Response to Growth Hormone Stimulus , Cellular Response to Molecule of Bacterial Origin , Positive Regulation of Endopeptidase Activity , Hepatitis C , CXCR4-mediated Signaling Events

Application Details

Application Notes:	WB 1:500-1:2000 IHC 1:50-1:100 IF 1:100-1:200
Restrictions:	For Research Use only

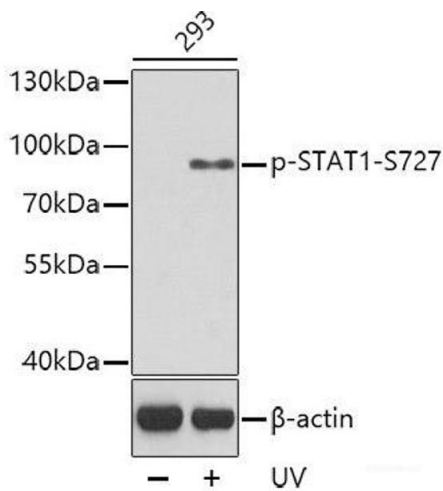
Handling

Format:	Liquid
Concentration:	1 mg/mL
Buffer:	PBS with 0.02 % sodium azide, 50 % glycerol, pH 7.3
Preservative:	Sodium azide
Precaution of Use:	This product contains Sodium azide: a POISONOUS AND HAZARDOUS SUBSTANCE which should be handled by trained staff only.
Storage:	-20 °C
Storage Comment:	Store at -20°C. Avoid freeze / thaw cycles.



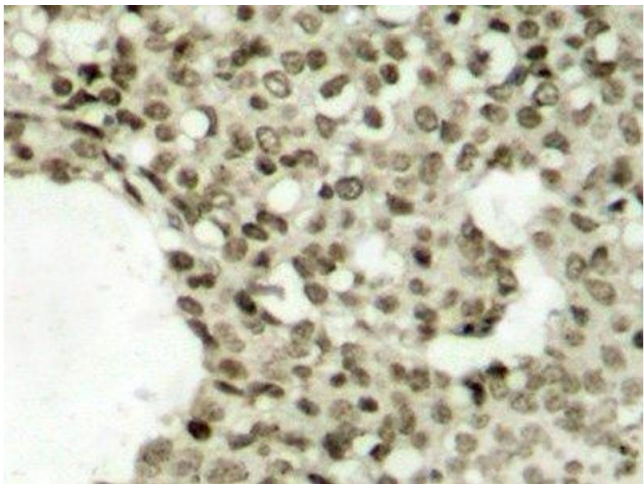
Immunofluorescence

Image 1. Immunofluorescence analysis of methanol-fixed HeLa cells using Phospho-STAT1(S727) Polyclonal Antibody



Western Blotting

Image 2. Western blot analysis of extracts from 293 cells using Phospho-STAT1(S727) Polyclonal Antibody.



Immunohistochemistry (Paraffin-embedded Sections)

Image 3. Immunohistochemistry of paraffin-embedded Human breast carcinoma tissue, using Phospho-STAT1(S727) Polyclonal Antibody