



[Go to Product page](#)

Datasheet for ABIN7265224
anti-YAP1 antibody (pSer127)

3 Images

Overview

Quantity:	200 µL
Target:	YAP1
Binding Specificity:	pSer127
Reactivity:	Human, Mouse, Rat
Host:	Rabbit
Clonality:	Polyclonal
Conjugate:	This YAP1 antibody is un-conjugated
Application:	Western Blotting (WB), Immunofluorescence (IF)

Product Details

Immunogen:	A synthetic phosphorylated peptide around S127 of human YAP1 (NP_001123617.1).
Isotype:	IgG
Characteristics:	Phosphorylated antibody
Purification:	Affinity purification

Target Details

Target:	YAP1
Alternative Name:	YAP1 (YAP1 Products)
Background:	This gene encodes a downstream nuclear effector of the Hippo signaling pathway which is involved in development, growth, repair, and homeostasis. This gene is known to play a role in

Target Details

the development and progression of multiple cancers as a transcriptional regulator of this signaling pathway and may function as a potential target for cancer treatment. Alternative splicing results in multiple transcript variants encoding different isoforms.

Molecular Weight: Observed_MW: 60 kDa/68 kDa
Calculated_MW: 36 kDa/48 kDa/49 kDa/50 kDa/52 kDa/53 kDa/54 kDa

Gene ID: 10413

UniProt: [P46937](#)

Pathways: [MAPK Signaling](#), [Stem Cell Maintenance](#), [Regulation of Lipid Metabolism by PPARAlpha](#)

Application Details

Application Notes: WB 1:500-1:1000 IF 1:20-1:100

Restrictions: For Research Use only

Handling

Format: Liquid

Concentration: 1 mg/mL

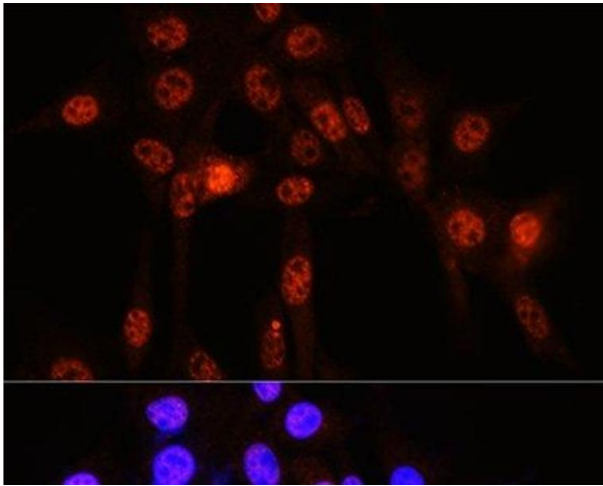
Buffer: PBS with 0.02 % sodium azide, 50 % glycerol, pH 7.3

Preservative: Sodium azide

Precaution of Use: This product contains Sodium azide: a POISONOUS AND HAZARDOUS SUBSTANCE which should be handled by trained staff only.

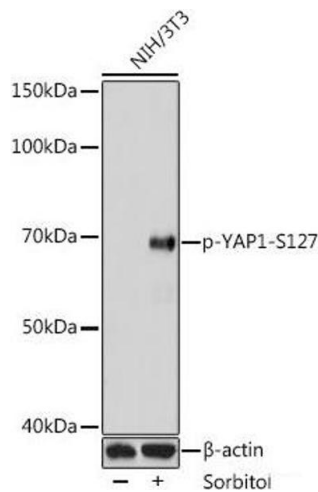
Storage: -20 °C

Storage Comment: Store at -20°C. Avoid freeze / thaw cycles.



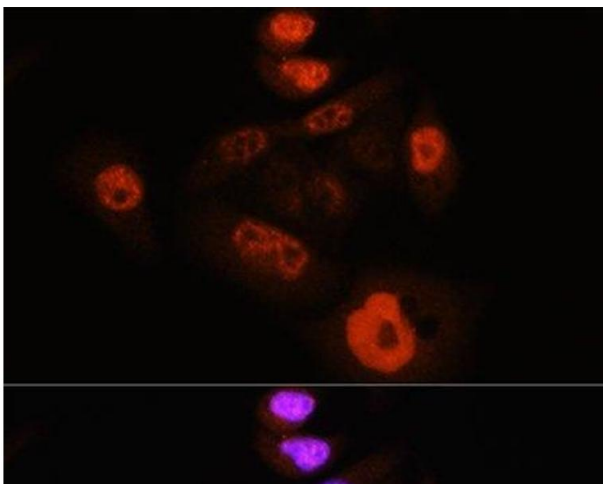
Immunofluorescence

Image 1. Immunofluorescence analysis of NIH-3T3 cells using Phospho-YAP1(S127) Polyclonal Antibody at dilution of 1:100 (40x lens). Blue: DAPI for nuclear staining.



Western Blotting

Image 2. Western blot analysis of extracts of NIH3T3 cells using Phospho-YAP1(S127) Polyclonal Antibody at dilution of 1:1000. NIH3T3 cells were treated by Sorbitol (0. 2M) at 37 °C for 60 minutes after serum-starvation overnight.



Immunofluorescence

Image 3. Immunofluorescence analysis of HeLa cells using Phospho-YAP1(S127) Polyclonal Antibody at dilution of 1:100 (40x lens). Blue: DAPI for nuclear staining.