

Datasheet for ABIN7265230
anti-PKC antibody (pSer660)[Go to Product page](#)

1 Image

Overview

Quantity:	200 µL
Target:	PKC (PKC pan)
Binding Specificity:	pSer660
Reactivity:	Human, Mouse, Rat
Host:	Rabbit
Clonality:	Polyclonal
Conjugate:	This PKC antibody is un-conjugated
Application:	Western Blotting (WB)

Product Details

Immunogen:	A phospho specific peptide corresponding to residues surrounding Ser660 of human PKC (pan) betall
Isotype:	IgG
Characteristics:	Phosphorylated antibody
Purification:	Affinity purification

Target Details

Target:	PKC (PKC pan)
Alternative Name:	PKC (PKC pan Products)
Background:	Protein kinase C (PKC) is a family of serine- and threonine-specific protein kinases that can be

Target Details

activated by calcium and the second messenger diacylglycerol. PKC family members phosphorylate a wide variety of protein targets and are known to be involved in diverse cellular signaling pathways. PKC family members also serve as major receptors for phorbol esters, a class of tumor promoters. Each member of the PKC family has a specific expression profile and is believed to play a distinct role in cells. The protein encoded by this gene is one of the PKC family members. This kinase has been reported to play roles in many different cellular processes, such as cell adhesion, cell transformation, cell cycle checkpoint, and cell volume control. Knockout studies in mice suggest that this kinase may be a fundamental regulator of cardiac contractility and Ca(2+) handling in myocytes.

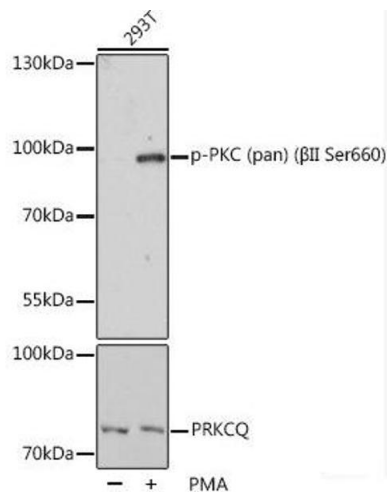
Molecular Weight:	Observed_MW: 95 kDa Calculated_MW: 59 kDa/67 kDa/74- 83 kDa
Gene ID:	5578, 5579, 5580
UniProt:	P17252 , P05771 , Q05655 , Q02156 , P24723 , Q04759
Pathways:	Positive Regulation of Response to DNA Damage Stimulus

Application Details

Application Notes:	WB 1:500-1:2000
Restrictions:	For Research Use only

Handling

Format:	Liquid
Concentration:	1 mg/mL
Buffer:	PBS with 0.02 % sodium azide, 50 % glycerol, pH 7.3
Preservative:	Sodium azide
Precaution of Use:	This product contains Sodium azide: a POISONOUS AND HAZARDOUS SUBSTANCE which should be handled by trained staff only.
Storage:	-20 °C
Storage Comment:	Store at -20°C. Avoid freeze / thaw cycles.



Western Blotting

Image 1. Western blot analysis of extracts of 293T cells using Phospho-PKC (pan) (βII Ser660) Polyclonal Antibody at dilution of 1:1000.