



[Go to Product page](#)

Datasheet for ABIN7265260  
**anti-SMAD3 antibody (pThr179)**

5 Images

Overview

Quantity:	200 µL
Target:	SMAD3
Binding Specificity:	pThr179
Reactivity:	Human, Mouse, Rat
Host:	Rabbit
Clonality:	Polyclonal
Conjugate:	This SMAD3 antibody is un-conjugated
Application:	Western Blotting (WB), Immunohistochemistry (IHC)

Product Details

Immunogen:	A synthetic phosphorylated peptide around T179 of human SMAD3 (NP_005893.1).
Isotype:	IgG
Characteristics:	Phosphorylated antibody
Purification:	Affinity purification

Target Details

Target:	SMAD3
Alternative Name:	SMAD3 ( <a href="#">SMAD3 Products</a> )
Background:	The protein encoded by this gene belongs to the SMAD, a family of proteins similar to the gene products of the Drosophila gene 'mothers against decapentaplegic' (Mad) and the C. elegans

## Target Details

---

gene Sma. SMAD proteins are signal transducers and transcriptional modulators that mediate multiple signaling pathways. This protein functions as a transcriptional modulator activated by transforming growth factor-beta and is thought to play a role in the regulation of carcinogenesis.

Molecular Weight: Observed\_MW: 48 kDa  
Calculated\_MW: 25 kDa/35 kDa/43 kDa/48 kDa

Gene ID: 4088

UniProt: [P84022](#)

Pathways: [Cell Division Cycle](#), [Chromatin Binding](#), [Cell-Cell Junction Organization](#), [Positive Regulation of Endopeptidase Activity](#), [Autophagy](#)

## Application Details

---

Application Notes: WB 1:500-1:2000 IHC 1:50-1:200

Restrictions: For Research Use only

## Handling

---

Format: Liquid

Concentration: 1 mg/mL

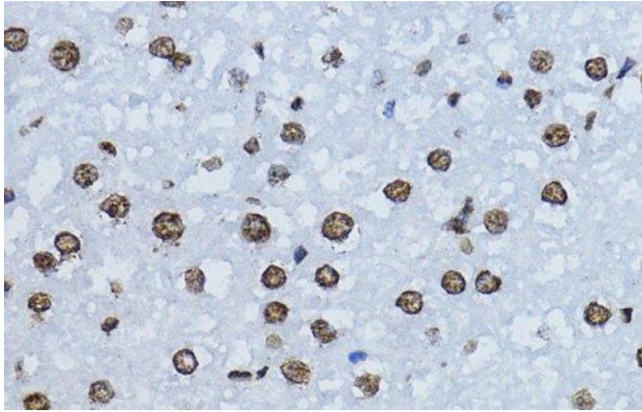
Buffer: PBS with 0.02 % sodium azide, 50 % glycerol, pH 7.3

Preservative: Sodium azide

Precaution of Use: This product contains Sodium azide: a POISONOUS AND HAZARDOUS SUBSTANCE which should be handled by trained staff only.

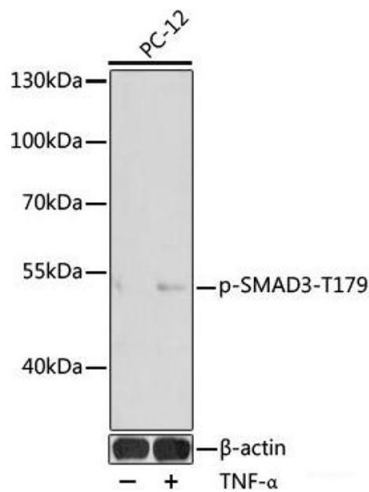
Storage: -20 °C

Storage Comment: Store at -20°C. Avoid freeze / thaw cycles.



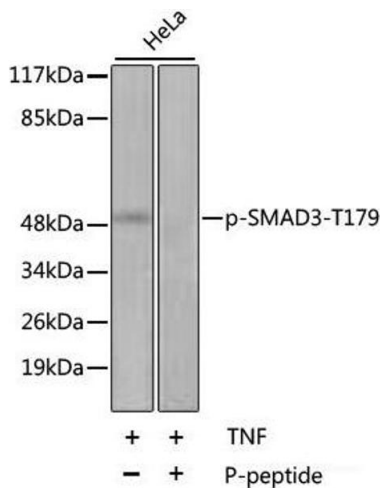
### Immunohistochemistry (Paraffin-embedded Sections)

**Image 1.** Immunohistochemistry of paraffin-embedded Rat liver using Phospho-SMAD3(T179) Polyclonal Antibody at dilution of 1:200 (40x lens).



### Western Blotting

**Image 2.** Western blot analysis of extracts of PC-12 cells using Phospho-SMAD3(T179) Polyclonal Antibody at dilution of 1:1000. PC-12 cells were treated by TNF-α (20 ng/mL) at 37 °C for 30 minutes after serum-starvation overnight.



### Western Blotting

**Image 3.** Western blot analysis of extracts of HeLa cell line using Phospho-SMAD3(T179) Polyclonal Antibody.

Please check the [product details page](#) for more images. Overall 5 images are available for ABIN7265260.