



[Go to Product page](#)

Datasheet for ABIN7265266  
**anti-RPS6KB1 antibody (pThr389)**

4 Images

### Overview

|                      |   |
|----------------------|---|
| Quantity:            | 200 µL  |
| Target:              | RPS6KB1   |
| Binding Specificity: | pThr389   |
| Reactivity:          | Human, Mouse, Rat                                   |
| Host:                | Rabbit  |
| Clonality:           | Polyclonal  |
| Conjugate:           | This RPS6KB1 antibody is un-conjugated              |
| Application:         | Immunohistochemistry (IHC), Immunofluorescence (IF) |

### Product Details

|                  |  |
|------------------|--|
| Immunogen:       | A phospho specific peptide corresponding to residues surrounding T389 of human P70 S6K |
| Isotype:         | IgG  |
| Characteristics: | Phosphorylated antibody  |
| Purification:    | Affinity purification  |

### Target Details

|                   |  |
|-------------------|--|
| Target:           | RPS6KB1  |
| Alternative Name: | P70 S6K ( <a href="#">RPS6KB1 Products</a> )   |
| Background:       | This gene encodes a member of the ribosomal S6 kinase family of serine/threonine kinases.<br>The encoded protein responds to mTOR (mammalian target of rapamycin) signaling to |

## Target Details

---

promote protein synthesis, cell growth, and cell proliferation. Activity of this gene has been associated with human cancer. Alternatively spliced transcript variants have been observed. The use of alternative translation start sites results in isoforms with longer or shorter N-termini which may differ in their subcellular localizations. There are two pseudogenes for this gene on chromosome 17.

|           |  |
|-----------|--|
| Gene ID:  | 6198   |
| UniProt:  | <a href="#">P23443</a>   |
| Pathways: | <a href="#">PI3K-Akt Signaling</a> , <a href="#">RTK Signaling</a> , <a href="#">AMPK Signaling</a> , <a href="#">Regulation of Cell Size</a> , <a href="#">Skeletal Muscle Fiber Development</a> , <a href="#">Feeding Behaviour</a> , <a href="#">G-protein mediated Events</a> , <a href="#">Smooth Muscle Cell Migration</a> , <a href="#">Interaction of EGFR with phospholipase C-gamma</a> , <a href="#">Warburg Effect</a> |

## Application Details

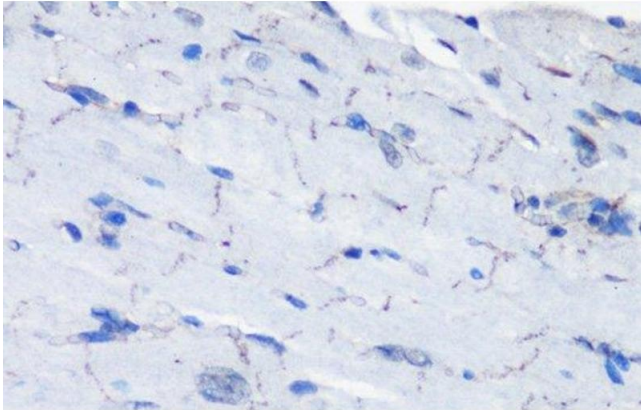
---

|                    |                              |
|--------------------|------------------------------|
| Application Notes: | IHC 1:50-1:200 IF 1:50-1:200 |
| Restrictions:      | For Research Use only        |

## Handling

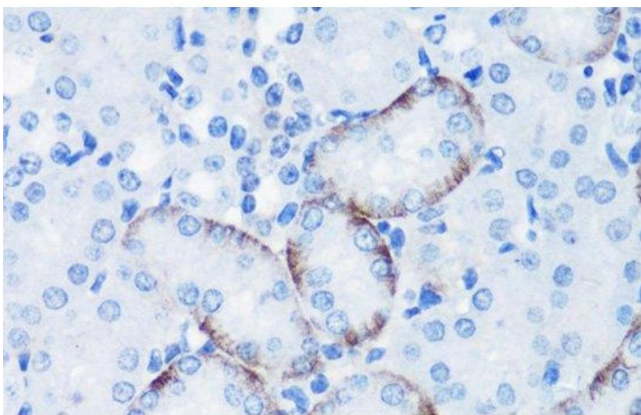
---

|                    |  |
|--------------------|--|
| Format:            | Liquid   |
| Concentration:     | 1 mg/mL  |
| Buffer:            | PBS with 0.02 % sodium azide, 50 % glycerol, pH 7.3  |
| Preservative:      | Sodium azide   |
| Precaution of Use: | This product contains Sodium azide: a POISONOUS AND HAZARDOUS SUBSTANCE which should be handled by trained staff only. |
| Storage:           | -20 °C   |
| Storage Comment:   | Store at -20°C. Avoid freeze / thaw cycles.  |



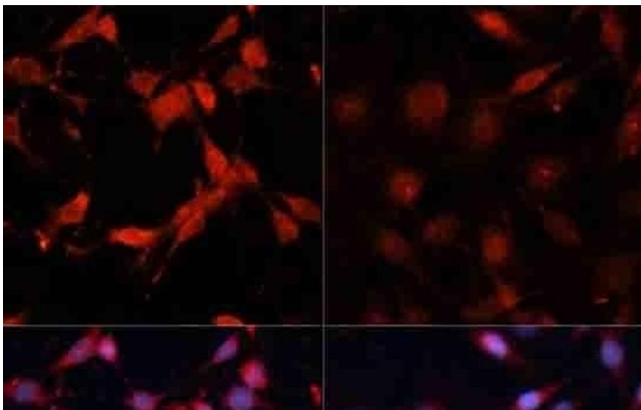
#### Immunohistochemistry (Paraffin-embedded Sections)

**Image 1.** Immunohistochemistry of paraffin-embedded Mouse heart using Phospho-P70 S6K(T389) Polyclonal Antibody at dilution of 1:100 (40x lens).



#### Immunohistochemistry (Paraffin-embedded Sections)

**Image 2.** Immunohistochemistry of paraffin-embedded Mouse kidney using Phospho-P70 S6K(T389) Polyclonal Antibody at dilution of 1:100 (40x lens).



#### Immunofluorescence

**Image 3.** Immunofluorescence analysis of C6 cells using Phospho-P70 S6K(T389) Polyclonal Antibody at dilution of 1:100. C6 cells were treated by Serum-starvation overnight at 37 °C.

Please check the [product details page](#) for more images. Overall 4 images are available for ABIN7265266.