

Datasheet for ABIN7265278

anti-POLR2A/RPB1 antibody (pSer5)

5 Images

[Go to Product page](#)

Overview

Quantity:	200 µL
Target:	POLR2A/RPB1 (POLR2A)
Binding Specificity:	pSer5
Reactivity:	Human, Mouse, Rat
Host:	Rabbit
Clonality:	Polyclonal
Conjugate:	This POLR2A/RPB1 antibody is un-conjugated
Application:	Western Blotting (WB), Immunofluorescence (IF), Immunohistochemistry (IHC)

Product Details

Immunogen:	A phospho specific peptide corresponding to residues surrounding S5 of human POLR2A
Isotype:	IgG
Characteristics:	Phosphorylated antibody
Purification:	Affinity purification

Target Details

Target:	POLR2A/RPB1 (POLR2A)
Alternative Name:	POLR2A (POLR2A Products)
Background:	This gene encodes the largest subunit of RNA polymerase II, the polymerase responsible for synthesizing messenger RNA in eukaryotes. The product of this gene contains a carboxy

Target Details

terminal domain composed of heptapeptide repeats that are essential for polymerase activity. These repeats contain serine and threonine residues that are phosphorylated in actively transcribing RNA polymerase. In addition, this subunit, in combination with several other polymerase subunits, forms the DNA binding domain of the polymerase, a groove in which the DNA template is transcribed into RNA.

Molecular Weight: Observed_MW: 260 kDa
Calculated_MW: 63 kDa/217 kDa

Gene ID: 5430

UniProt: [P24928](#)

Pathways: [Regulatory RNA Pathways](#)

Application Details

Application Notes: WB 1:500-1:2000 IHC 1:50-1:100 IF 1:50-1:100

Restrictions: For Research Use only

Handling

Format: Liquid

Concentration: 1 mg/mL

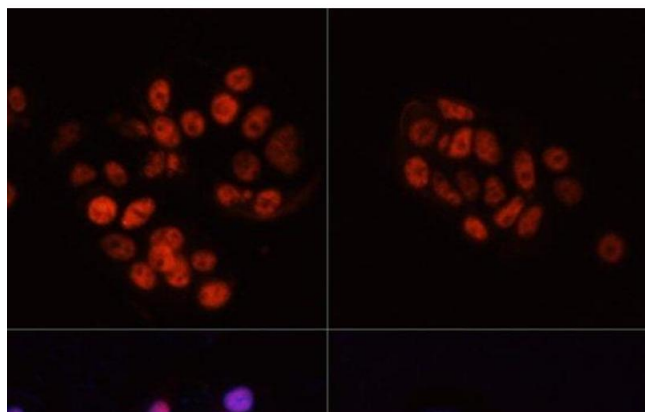
Buffer: PBS with 0.02 % sodium azide, 50 % glycerol, pH 7.3

Preservative: Sodium azide

Precaution of Use: This product contains Sodium azide: a POISONOUS AND HAZARDOUS SUBSTANCE which should be handled by trained staff only.

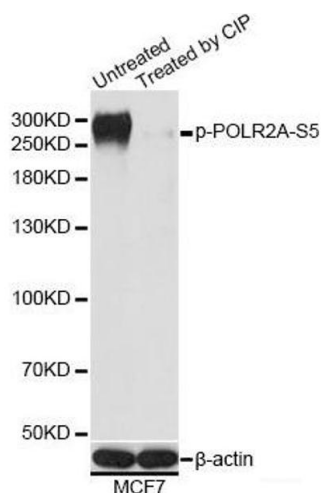
Storage: -20 °C

Storage Comment: Store at -20°C. Avoid freeze / thaw cycles.



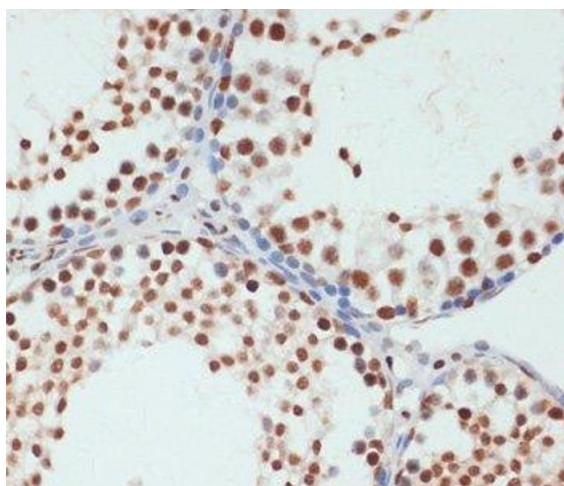
Immunofluorescence

Image 1. Immunofluorescence analysis of MCF7 cells using Phospho-POLR2A(S5) Polyclonal Antibody at dilution of 1:100. MCF7 cells were treated by nocodazole (50 ng/mL) at 37 °C for 20 hours (left). Blue: DAPI for nuclear staining.



Western Blotting

Image 2. Western blot analysis of extracts of MCF7 cells using Phospho-POLR2A(S5) Polyclonal Antibody at dilution of 1:1000. MCF7 cell lysate were treated by CIP (20 µL CIP for each 400 µL cell lysate) at 37 °C for 1 hour.



Immunohistochemistry (Paraffin-embedded Sections)

Image 3. Immunohistochemistry of paraffin-embedded Rat testis using Phospho-POLR2A(S5) Polyclonal Antibody at dilution of 1:100 (40x lens).

Please check the [product details page](#) for more images. Overall 5 images are available for ABIN7265278.