

Datasheet for ABIN7265286

anti-Connexin 43/GJA1 antibody (pSer368)[Go to Product page](#)**2** Images

Overview

Quantity:	200 µL
Target:	Connexin 43/GJA1 (GJA1)
Binding Specificity:	pSer368
Reactivity:	Rat, Mouse
Host:	Rabbit
Clonality:	Polyclonal
Conjugate:	This Connexin 43/GJA1 antibody is un-conjugated
Application:	Immunohistochemistry (IHC)

Product Details

Immunogen:	A phospho specific peptide corresponding to residues surrounding S368 of human GJA1
Isotype:	IgG
Characteristics:	Phosphorylated antibody
Purification:	Affinity purification

Target Details

Target:	Connexin 43/GJA1 (GJA1)
Alternative Name:	GJA1 (GJA1 Products)
Background:	This gene is a member of the connexin gene family. The encoded protein is a component of gap junctions, which are composed of arrays of intercellular channels that provide a route for

Target Details

the diffusion of low molecular weight materials from cell to cell. The encoded protein is the major protein of gap junctions in the heart that are thought to have a crucial role in the synchronized contraction of the heart and in embryonic development. A related intronless pseudogene has been mapped to chromosome 5. Mutations in this gene have been associated with oculodentodigital dysplasia, autosomal recessive craniometaphyseal dysplasia and heart malformations.

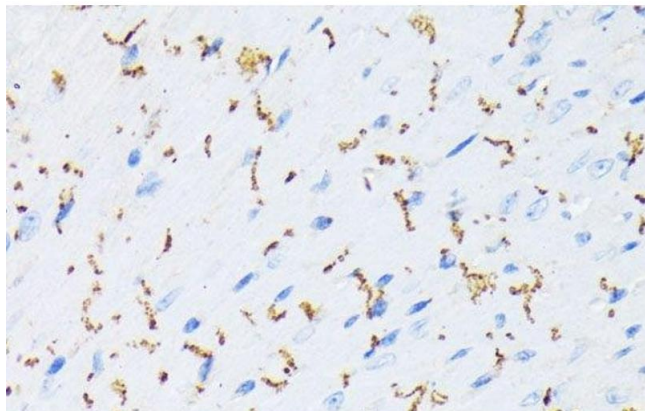
Gene ID:	2697
UniProt:	P17302
Pathways:	MAPK Signaling , Myometrial Relaxation and Contraction , Cell-Cell Junction Organization

Application Details

Application Notes:	IHC 1:50-1:200
Restrictions:	For Research Use only

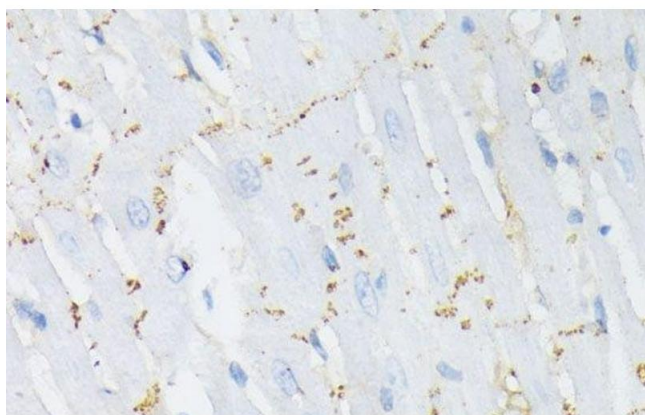
Handling

Format:	Liquid
Concentration:	1 mg/mL
Buffer:	PBS with 0.02 % sodium azide, 50 % glycerol, pH 7.3
Preservative:	Sodium azide
Precaution of Use:	This product contains Sodium azide: a POISONOUS AND HAZARDOUS SUBSTANCE which should be handled by trained staff only.
Storage:	-20 °C
Storage Comment:	Store at -20°C. Avoid freeze / thaw cycles.



Immunohistochemistry (Paraffin-embedded Sections)

Image 1. Immunohistochemistry of paraffin-embedded Mouse heart using Phospho-GJA1(S368) Polyclonal Antibody at dilution of 1:200 (40x lens).



Immunohistochemistry (Paraffin-embedded Sections)

Image 2. Immunohistochemistry of paraffin-embedded Rat heart using Phospho-GJA1(S368) Polyclonal Antibody at dilution of 1:200 (40x lens).