

Datasheet for ABIN7265288

anti-Phospholamban antibody (pThr17)[Go to Product page](#)**1** Image

Overview

Quantity:	200 µL
Target:	Phospholamban (PLN)
Binding Specificity:	pThr17
Reactivity:	Human, Rat, Mouse
Host:	Rabbit
Clonality:	Polyclonal
Conjugate:	This Phospholamban antibody is un-conjugated
Application:	Immunohistochemistry (IHC)

Product Details

Immunogen:	A phospho specific peptide corresponding to residues surrounding T17 of human PLN
Isotype:	IgG
Characteristics:	Phosphorylated antibody
Purification:	Affinity purification

Target Details

Target:	Phospholamban (PLN)
Alternative Name:	PLN (PLN Products)
Background:	The protein encoded by this gene is found as a pentamer and is a major substrate for the cAMP-dependent protein kinase in cardiac muscle. The encoded protein is an inhibitor of

Target Details

cardiac muscle sarcoplasmic reticulum Ca(2+)-ATPase in the unphosphorylated state, but inhibition is relieved upon phosphorylation of the protein. The subsequent activation of the Ca(2+) pump leads to enhanced muscle relaxation rates, thereby contributing to the inotropic response elicited in heart by beta-agonists. The encoded protein is a key regulator of cardiac diastolic function. Mutations in this gene are a cause of inherited human dilated cardiomyopathy with refractory congestive heart failure, and also familial hypertrophic cardiomyopathy.

Gene ID: 5350

UniProt: [P26678](#)

Pathways: [Negative Regulation of Transporter Activity](#)

Application Details

Application Notes: IHC 1:50-1:200

Restrictions: For Research Use only

Handling

Format: Liquid

Concentration: 1 mg/mL

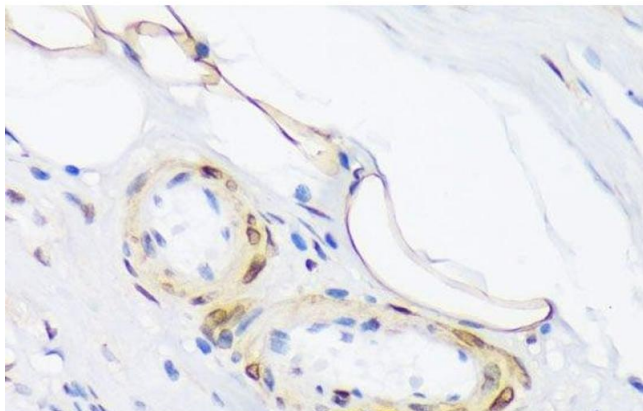
Buffer: PBS with 0.02 % sodium azide, 50 % glycerol, pH 7.3

Preservative: Sodium azide

Precaution of Use: This product contains Sodium azide: a POISONOUS AND HAZARDOUS SUBSTANCE which should be handled by trained staff only.

Storage: -20 °C

Storage Comment: Store at -20°C. Avoid freeze / thaw cycles.



Immunohistochemistry (Paraffin-embedded Sections)

Image 1. Immunohistochemistry of paraffin-embedded Human appendix using Phospho-PLN(T17) Polyclonal Antibody at dilution of 1:100 (40x lens).