

Datasheet for ABIN7265296  
**anti-MYL9 antibody (pSer19, pThr18)**[Go to Product page](#)

## 3 Images

## Overview

Quantity:	200 µL
Target:	MYL9
Binding Specificity:	pSer19, pThr18
Reactivity:	Human, Mouse, Rat
Host:	Rabbit
Clonality:	Polyclonal
Conjugate:	This MYL9 antibody is un-conjugated
Application:	Western Blotting (WB), Immunohistochemistry (IHC)

## Product Details

Immunogen:	A synthetic phosphorylated peptide around of human Phospho-MYL9-T18/S19.
Isotype:	IgG
Characteristics:	Phosphorylated antibody
Purification:	Affinity purification

## Target Details

Target:	MYL9
Alternative Name:	MYL9 ( <a href="#">MYL9 Products</a> )
Background:	Myosin, a structural component of muscle, consists of two heavy chains and four light chains. The protein encoded by this gene is a myosin light chain that may regulate muscle contraction

## Target Details

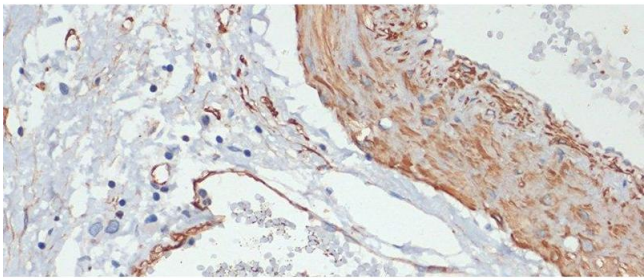
	by modulating the ATPase activity of myosin heads. The encoded protein binds calcium and is activated by myosin light chain kinase. Two transcript variants encoding different isoforms have been found for this gene.
Molecular Weight:	Observed_MW: 19 kDa Calculated_MW: 13 kDa/19 kDa
Gene ID:	10398
UniProt:	<a href="#">P24844</a>

## Application Details

Application Notes:	WB 1:500-1:2000 IHC 1:50-1:200
Restrictions:	For Research Use only

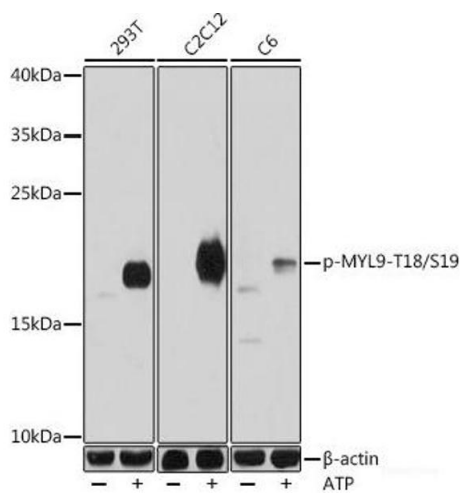
## Handling

Format:	Liquid
Concentration:	1 mg/mL
Buffer:	PBS with 0.02 % sodium azide, 50 % glycerol, pH 7.3
Preservative:	Sodium azide
Precaution of Use:	This product contains Sodium azide: a POISONOUS AND HAZARDOUS SUBSTANCE which should be handled by trained staff only.
Storage:	-20 °C
Storage Comment:	Store at -20°C. Avoid freeze / thaw cycles.



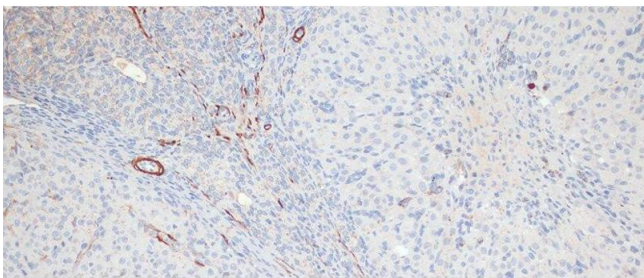
Immunohistochemistry (Paraffin-embedded Sections)

**Image 1.** Immunohistochemistry of paraffin-embedded Human gastric cancer using Phospho-MYL9(T18/S19) Polyclonal Antibody at dilution of 1:100 (40x lens).



Western Blotting

**Image 2.** Western blot analysis of extracts of various cell lines using Phospho-MYL9(T18/S19) Polyclonal Antibody at dilution of 1:1000. 293T cells and C2C12 and C6 cells were treated by ATP(5 mM) at 30 °C for 1 hour.



Immunohistochemistry (Paraffin-embedded Sections)

**Image 3.** Immunohistochemistry of paraffin-embedded Rat ovary using Phospho-MYL9(T18/S19) Polyclonal Antibody at dilution of 1:100 (20x lens).