



[Go to Product page](#)

Datasheet for ABIN7265305
anti-AGPAT3 antibody (AA 145-310)

1 Image

Overview

Quantity:	100 µL
Target:	AGPAT3
Binding Specificity:	AA 145-310
Reactivity:	Human
Host:	Rabbit
Clonality:	Polyclonal
Conjugate:	This AGPAT3 antibody is un-conjugated
Application:	Western Blotting (WB)

Product Details

Purpose:	AGPAT3 Rabbit pAb
Immunogen:	Recombinant fusion protein containing a sequence corresponding to amino acids 145-310 of human AGPAT3 (NP_064517.1).
Sequence:	KRKWEEDRDT VVEGLRRLSD YPEYMWFLLY CEGTRFTETK HRVSMEVAAA KGLPVLKYHL LPRTKGFTTA VKCLRGTVAA VYDVTLNFRG NKNPSLLGIL YGKKYEADMC VRRFPLEDIP LDEKEAAQWL HKLYQEKDAL QEIYNQKGMF PGEQFKPARR PWTLLN
Isotype:	IgG
Cross-Reactivity:	Human, Mouse
Characteristics:	Polyclonal Antibodies
Purification:	Affinity purification

Target Details

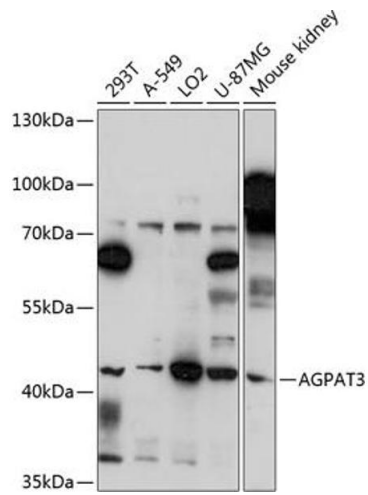
Target:	AGPAT3
Alternative Name:	AGPAT3 (AGPAT3 Products)
Background:	<p>The protein encoded by this gene is an acyltransferase that converts lysophosphatidic acid into phosphatidic acid, which is the second step in the de novo phospholipid biosynthetic pathway. The encoded protein may be an integral membrane protein. Two transcript variants encoding the same protein have been found for this gene.,AGPAT3,LPAAT-GAMMA1,LPAAT3,Cancer,Signal Transduction,Endocrine & Metabolism,Lipid Metabolism,AGPAT3</p>
Molecular Weight:	36kDa/43kDa/45kDa
Gene ID:	56894
UniProt:	Q9NRZ7

Application Details

Application Notes:	WB,1:500 - 1:2000
Restrictions:	For Research Use only

Handling

Format:	Liquid
Buffer:	PBS with 0.02 % sodium azide,50 % glycerol, pH 7.3.
Preservative:	Sodium azide
Precaution of Use:	This product contains Sodium azide: a POISONOUS AND HAZARDOUS SUBSTANCE which should be handled by trained staff only.
Storage:	-20 °C
Storage Comment:	Store at -20°C. Avoid freeze / thaw cycles.



Western Blotting

Image 1. Western blot analysis of extracts of various cell lines, using antibody (ABIN7265305) at 1:3000 dilution. Secondary antibody: HRP Goat Anti-Rabbit IgG (H+L) (ABIN1684268 and ABIN3020597) at 1:10000 dilution. Lysates/proteins: 25 µg per lane. Blocking buffer: 3% nonfat dry milk in TBST. Detection: ECL Basic Kit (RM00020). Exposure time: 90s.