

Datasheet for ABIN7265312
anti-14-3-3 theta antibody[Go to Product page](#)

2 Images

Overview

Quantity:	100 µL
Target:	14-3-3 theta (YWHAQ)
Reactivity:	Human
Host:	Rabbit
Clonality:	Monoclonal
Conjugate:	This 14-3-3 theta antibody is un-conjugated
Application:	Western Blotting (WB), Immunofluorescence (IF)

Product Details

Purpose:	14-3-3 Theta Rabbit mAb
Immunogen:	A synthesized peptide derived from human 14-3-3 Theta
Isotype:	IgG
Cross-Reactivity:	Human, Mouse, Rat
Characteristics:	Monoclonal Antibodies
Purification:	Affinity purification

Target Details

Target:	14-3-3 theta (YWHAQ)
Alternative Name:	YWHAQ (YWHAQ Products)
Background:	This gene product belongs to the 14-3-3 family of proteins which mediate signal transduction

Target Details

by binding to phosphoserine-containing proteins. This highly conserved protein family is found in both plants and mammals, and this protein is 99% identical to the mouse and rat orthologs. This gene is upregulated in patients with amyotrophic lateral sclerosis. It contains in its 5' UTR a 6 bp tandem repeat sequence which is polymorphic, however, there is no correlation between the repeat number and the disease. [provided by RefSeq, Jul 2008],14-3-3, 1C5, HS1,Apoptosis,Apoptosis_Mitochondrial Control of Apoptosis,Cell Biology & Developmental Biology,Cell Cycle,Cell Type Marker,Cell Type Marker_Neuron marker,Cell Type Marker_Synapse marker,Epigenetics & Nuclear Signaling,G2/M DNA Damage Checkpoint,Hippo Signaling Pathway,MAPK-Erk Signaling Pathway,MAPK-JNK Signaling Pathway,Neuroscience,PI3K-Akt Signaling Pathway,Signal Transduction,Stem Cells,YWHAQ

Molecular Weight: 28kDa

Gene ID: 10971

UniProt: [P27348](#)

Pathways: [Apoptosis](#), [Myometrial Relaxation and Contraction](#)

Application Details

Application Notes: WB,1:500 - 1:2000,IF,1:50 - 1:200

Restrictions: For Research Use only

Handling

Format: Liquid

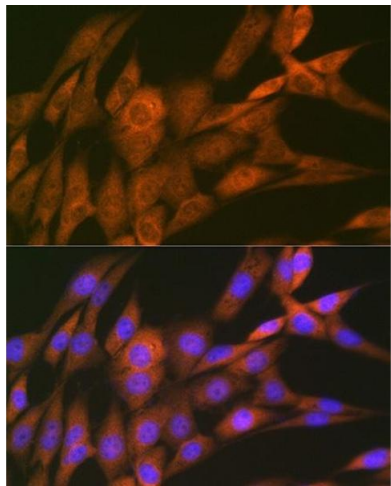
Buffer: PBS with 0.02 % sodium azide,0.05 % BSA,50 % glycerol, pH 7.3.

Preservative: Sodium azide

Precaution of Use: This product contains Sodium azide: a POISONOUS AND HAZARDOUS SUBSTANCE which should be handled by trained staff only.

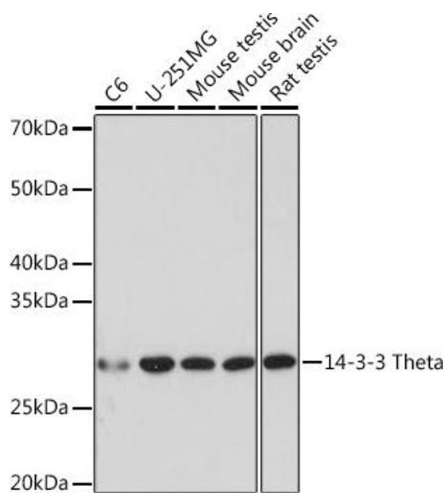
Storage: -20 °C

Storage Comment: Store at -20°C. Avoid freeze / thaw cycles.



Immunofluorescence

Image 1. Immunofluorescence analysis of NIH-3T3 cells using 14-3-3 Theta Rabbit mAb (ABIN7265312) at dilution of 1:100 (40x lens). Blue: DAPI for nuclear staining.



Western Blotting

Image 2. Western blot analysis of extracts of various cell lines, using 14-3-3 Theta Rabbit mAb (ABIN7265312) at 1:1000 dilution. Secondary antibody: HRP Goat Anti-Rabbit IgG (H+L) (ABIN1684268 and ABIN3020597) at 1:10000 dilution. Lysates/proteins: 25 µg per lane. Blocking buffer: 3 % nonfat dry milk in TBST. Detection: ECL Basic Kit (RM00020). Exposure time: 10s.