

Datasheet for ABIN7265328

anti-HMGCS2 antibody**3** Images[Go to Product page](#)

Overview

Quantity:	100 µL
Target:	HMGCS2
Reactivity:	Human
Host:	Rabbit
Clonality:	Monoclonal
Conjugate:	This HMGCS2 antibody is un-conjugated
Application:	Western Blotting (WB), Immunohistochemistry (IHC)

Product Details

Purpose:	HMGCS2 Rabbit mAb
Immunogen:	Recombinant protein of human HMGCS2.
Isotype:	IgG
Cross-Reactivity:	Human, Mouse, Rat
Characteristics:	Monoclonal Antibodies
Purification:	Affinity purification

Target Details

Target:	HMGCS2
Alternative Name:	HMGCS2 (HMGCS2 Products)
Background:	The protein encoded by this gene belongs to the HMG-CoA synthase family. It is a

Target Details

mitochondrial enzyme that catalyzes the first reaction of ketogenesis, a metabolic pathway that provides lipid-derived energy for various organs during times of carbohydrate deprivation, such as fasting. Mutations in this gene are associated with HMG-CoA synthase deficiency.

Alternatively spliced transcript variants encoding different isoforms have been found for this gene.,HMGCS2, Hydroxymethylglutaryl-CoA synthase, mitochondrial, 3-hydroxy-3-methylglutaryl coenzyme A synthase, 3-hydroxy-3-methylglutaryl-CoA synthase 2,Cancer,Signal Transduction,Endocrine & Metabolism,Mitochondrial metabolism,Mitochondrial markers,Lipid Metabolism,Cholesterol Metabolism,Cardiovascular,Lipids,HMGCS2

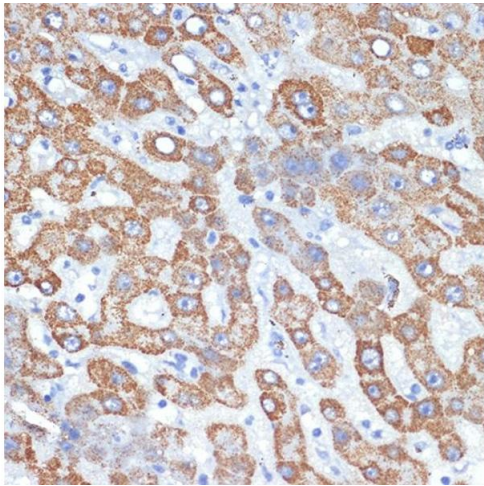
Molecular Weight:	50kDa
Gene ID:	3158
UniProt:	P54868
Pathways:	Response to Growth Hormone Stimulus , Cellular Response to Molecule of Bacterial Origin , Regulation of Lipid Metabolism by PPARalpha

Application Details

Application Notes:	WB,1:500 - 1:2000,IHC,1:50 - 1:200
Restrictions:	For Research Use only

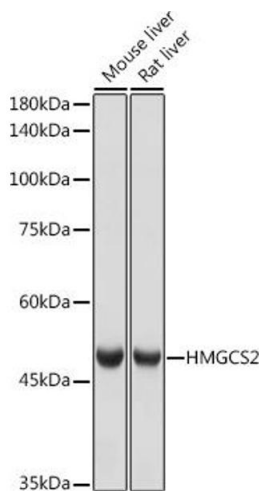
Handling

Format:	Liquid
Buffer:	PBS with 0.02 % sodium azide,0.05 % BSA,50 % glycerol, pH 7.3.
Preservative:	Sodium azide
Precaution of Use:	This product contains Sodium azide: a POISONOUS AND HAZARDOUS SUBSTANCE which should be handled by trained staff only.
Storage:	-20 °C
Storage Comment:	Store at -20°C. Avoid freeze / thaw cycles.



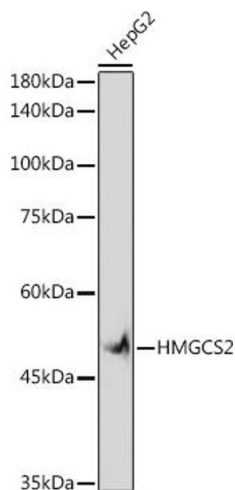
Immunohistochemistry

Image 1. Immunohistochemistry of paraffin-embedded human liver using HMGCS2 Rabbit mAb (ABIN7265328) at dilution of 1:100 (40x lens). Perform microwave antigen retrieval with 10 mM Tris/EDTA buffer pH 9.0 before commencing with IHC staining protocol.



Western Blotting

Image 2. Western blot analysis of extracts of various cell lines, using HMGCS2 antibody (ABIN7265328) at 1:1000 dilution. Secondary antibody: HRP Goat Anti-Rabbit IgG (H+L) (ABIN1684268 and ABIN3020597) at 1:10000 dilution. Lysates/proteins: 25 µg per lane. Blocking buffer: 3 % nonfat dry milk in TBST. Detection: ECL Basic Kit (RM00020). Exposure time: 1s.



Western Blotting

Image 3. Western blot analysis of extracts of HepG2 cells, using HMGCS2 antibody (ABIN7265328) at 1:1000 dilution. Secondary antibody: HRP Goat Anti-Rabbit IgG (H+L) (ABIN1684268 and ABIN3020597) at 1:10000 dilution. Lysates/proteins: 25 µg per lane. Blocking buffer: 3 % nonfat dry milk in TBST. Detection: ECL Basic Kit (RM00020). Exposure time: 180s.